

INDEX

PCH-10 _____	page	3
PCH-25 _____	page	3
PCH-25/38 _____	page	4
PCH-26 _____	page	4
PCH/M-28 _____	page	5
PCH/M-35 _____	page	6
PCH/M-75 _____	page	7
PCH/M-76 _____	page	8
PCH/M-100XL _____	page	9
PCH/M-40 _____	page	10
PCH/M-60 _____	page	11
PCH/M-80 _____	page	12
PCH/M-120 _____	page	13
PCH/M-70 _____	page	14
PCH/M-140 _____	page	15
PCH-145 _____	page	16
PCM-145 _____	page	17
PCH/M-150 _____	page	18
Maximizer 300 _____	page	19 to 21
PCH-20 _____	page	22
PCH-30 _____	page	22
PCH/M-100 _____	page	23
PCH/M-51 _____	page	24
PCH/M-52 _____	page	25
PCH/M-6B _____	page	26

ACCESSORIES

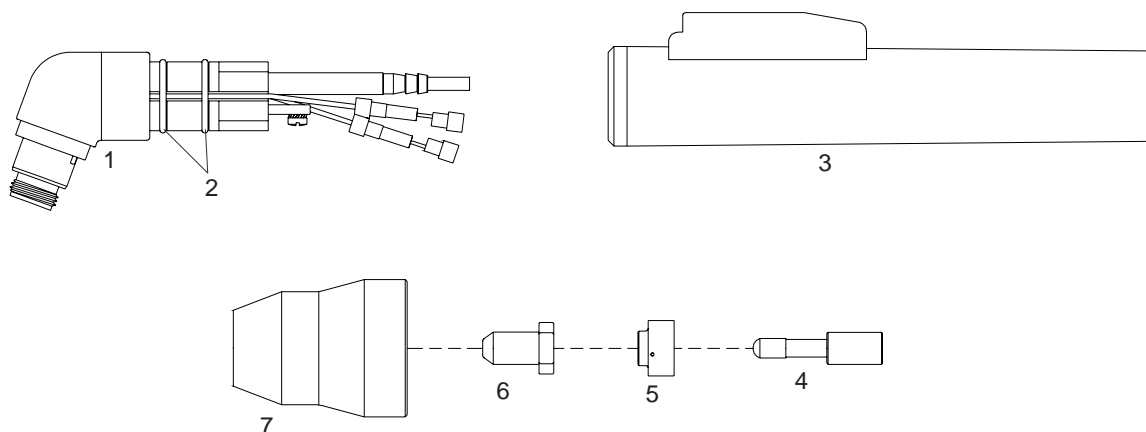
CIRCLE CUTTING ATTACHMENTS _____	page	27
----------------------------------	------------	----

AMPROCORP U.S.A., INC.

Website: <http://www.amprocopusa.com> E-mail: info@amprocopusa.com

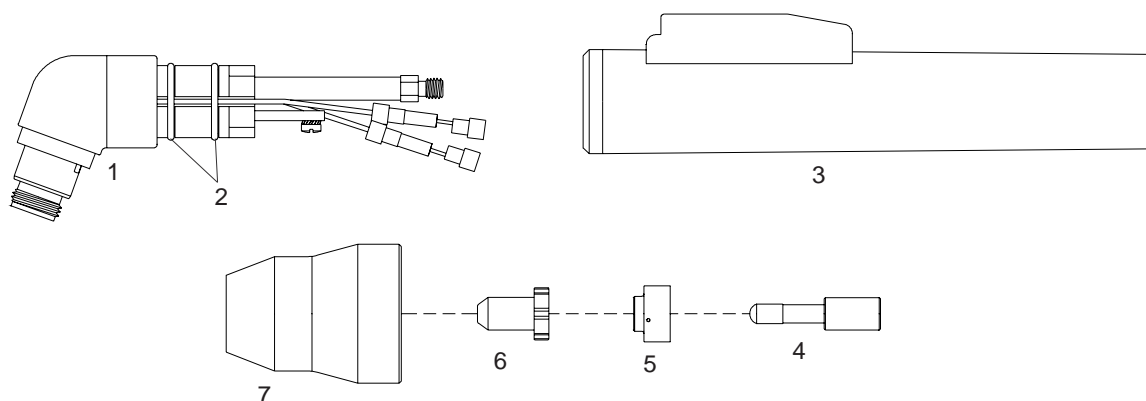
UNIT/TORCH COMPARISON FOR THERMAL DYNAMICS CUTTING SYSTEMS

UNIT	TORCH	UNIT	TORCH
4Xi	PCH/M51	Pak-1250XR	PCH/M52
6Xi	PCH/M51	Pak-1250XR	PCH52P
CC-65	M-200	Pak-15XC	PCH/M-150
CC-66	M-200	Pak-15XC W/Max 300 retrofit	PCM/145
Cougar 125	PCH-10	Pak-2XT	PCH20
Cut Master 80XL	PCH/M75	Pak-3	PCH30
Drag-Gun	PCH-10	Pak-3XR	PCH/M51
Drag-Gun 38	PCH-25/38	Pak-44	PCH/M6B
Dynapak 110	PCH20	Pak-45	PCH/M6B
Econopak 100	PCH/M76	Pak-5	PCH50
Econopak 25	PCH-25	Pak-5 (Mech)	PCH/M4B(T)
Econopak 50	PCH-26	Pak-5XR Dual Gas	PCH/M52
Merlin 1000	Maximizer 300	Pak-5XT	PCH/M51
Merlin 3000	PCM/145	Pak-625XR	PCH/M75
Merlin 3000	Maximizer 300	Pak-625XR	PCH/M51
Merlin 6000	Maximizer 300	Pak-625XR Dual Gas	PCH/M52
Merlin 6000GST	Maximizer 300	Pak-6XR	PCH/M51
Pak Master 100	PCH53P	Pak-6XR Dual Gas	PCH/M52
Pak Master 100	PCH/M53	Pak-750XR	PCH/M51
Pak Master 100XL	PCH/M100XL	Pak-750XR Dual Gas	PCH/M52
Pak Master 100XL Plus	PCH/M80	Pak-7XR	PCH/M51
Pak Master 150XL	PCH/M120	Pak-7XR Dual Gas	PCH/M52
Pak Master 25	PCH-25 Pak	Pak-8XR	PCH/M52
Master 38XL	PCH-25/38	Pak-Master 50XL	PCH/M-28
Pak Master 50XL Plus	PCH/M40	Pak Master 50	PCH/M35
Pak Master 75	PCH/M75	StakPak	PCH/M35
Pak Master 75XL	PCH/M75	StakPak	PCH/M70
Pak Master 75XL Plus	PCH/M60	StakPak	PCH/M140
Pak-10	PCH/M4B(T)	StakPak	PCH/M145
Pak-1000XR	PCH/M52	TA-500	M-200
Pak-10XR	PCH/M100	TAC-500	M-200
Pak-10XR	PCH/M52	TD750	PCM/145
Pak-10XR (Mech)	PCH/M4B(T)		

PCH-10 Drag-Gun, Cougar 125

Item	Ref.	Code	Description
NS	2-1020	07001	Hand torch complete with 20' (6 mts) cable
1	9-0016	07034	70° Torch head
2	8-0533	07100.53	O-Ring (20 pcs.)
3	9-0019E	07103	Handgrip complete with microswitch
4	9-6006	52519/D	Electrode - Hf
5	9-6007	60050	Gas Distributor
6	9-6099	51282	Tip - Air
7	9-6003	60347	Shield Cup
NS		07002	Air and power cable 20' (6 mts)

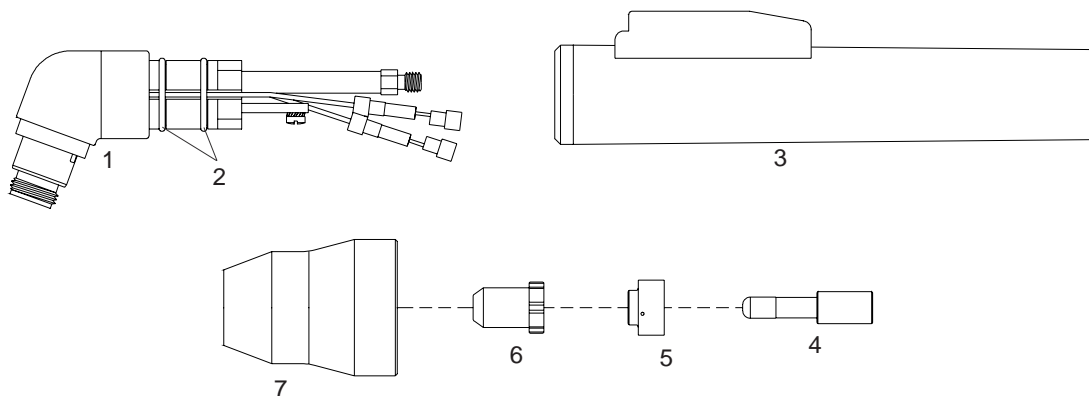
* CIRCLE CUTTING ATTACHMENT : See page #27

PCH-25 Econopak 25, Pak Master 25

Item	Ref.	Code	Description
NS	2-0250	07003	Hand torch complete with 12.5' (3.8 mts) cable
NS	2-0251	07005	Hand torch complete with 25' (7.5 mts) cable
1	9-5807	07035	70° Torch head
2	8-0533	07100.53	O-Ring (20 pcs.)
3	9-6282E	07103	Handgrip complete with microswitch
4	9-6006	52519/D	Electrode - Hf
5	9-6007	60050	Gas Distributor
6	9-4476	51286	Tip - Air
7	9-6003	60347	Shield Cup
NS	4-6067	07004	Air and power cable 12.5' (3.8 mts) - Hand torch
NS	4-6068	07006	Air and power cable 25' (7.5 mts) - Hand torch

* CIRCLE CUTTING ATTACHMENT : See page #27

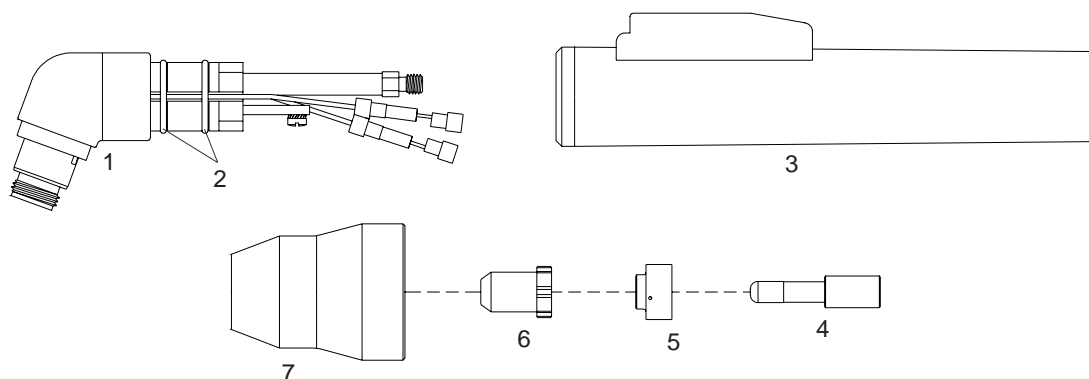
PCH-25/38 Pak Master 38XL, Drag-Gun 38



Item	Ref.	Code	Description
N/S	2-0380	07003	Hand torch complete with 12,5' (3.8 mts)
N/S	2-0381	07005	Hand torch complete with 25' (7.5 mts)
1	9-5807	07035	70° Torch head
2	8-0533	07100.53	O-Ring (20 pcs.)
3	9-6282E	07103	Handgrip complete with microswitch
4	9-6506	52523/D	Electrode - Hf
5	9-6507	60051	Gas Distributor
6	9-6501	51289	Tip - Air
7	9-6003	60347	Shield Cup
N/S	4-6067	07004	Air and power cable 12.5' (3.8 mts) - Hand torch
N/S	4-6068	07006	Air and power cable 25' (7.5 mts) - Hand torch

* CIRCLE CUTTING ATTACHMENT : Seepage#27

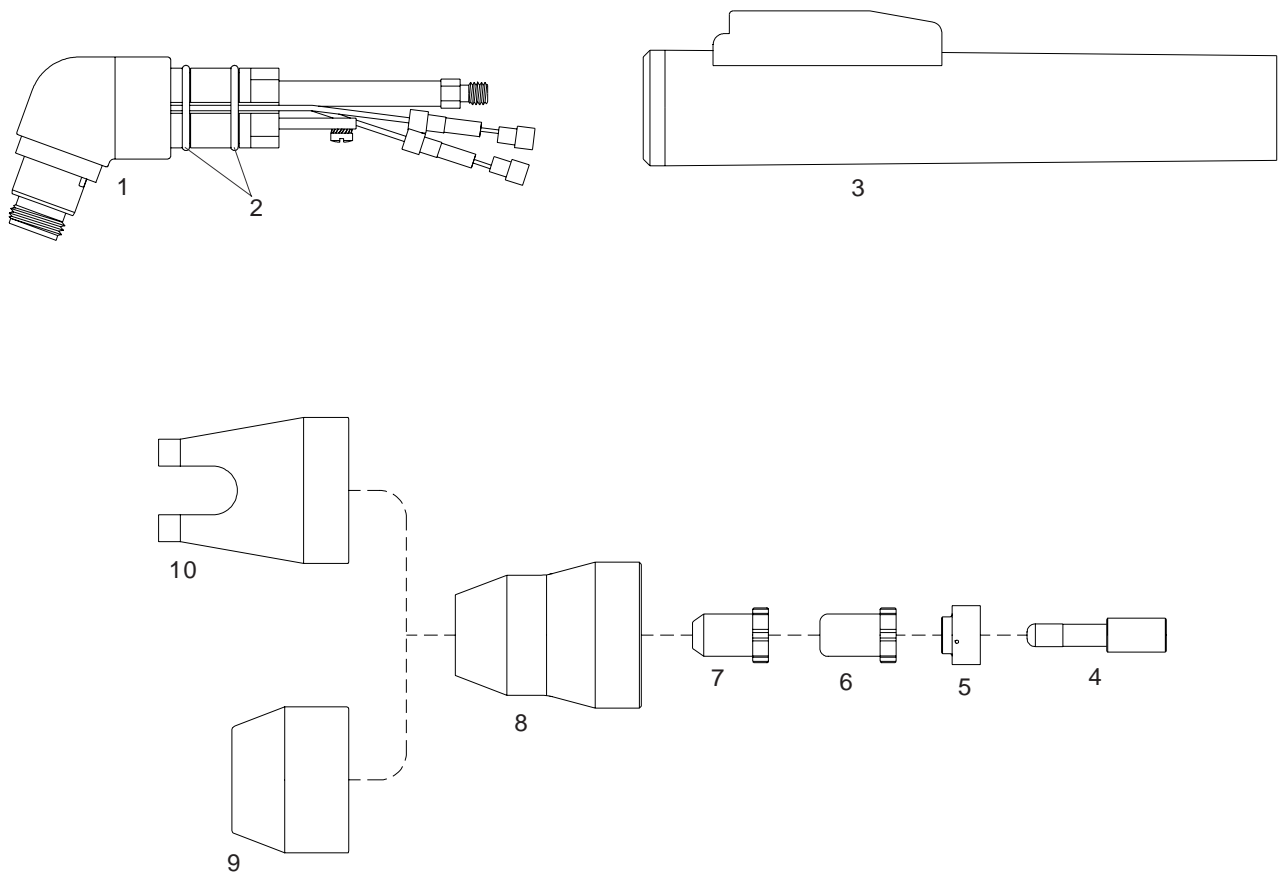
PCH-26 Econopak 50



Item	Ref.	Code	Description
N/S	2-3501	07011	Hand torch complete with 12,5' (3.8 mts)
N/S	2-3511	07012	Hand torch complete with 25' (7.5 mts)
1	9-5807	07035	70° Torch head
2	8-0533	07100.53	O-Ring (20 pcs.)
3	9-6282E	07103	Handgrip complete with microswitch
4	9-6506	52523/D	Electrode - Hf
5	9-6507	60051	Gas Distributor
6	9-6501	51289	Tip - Air
7	9-6003	60347	Shield Cup
N/S	4-6071	07013	Air and power cable 12.5' (3.8 mts) - Hand torch
N/S	4-6072	07014	Air and power cable 25' (7.5 mts) - Hand torch

* CIRCLE CUTTING ATTACHMENT : Seepage#27

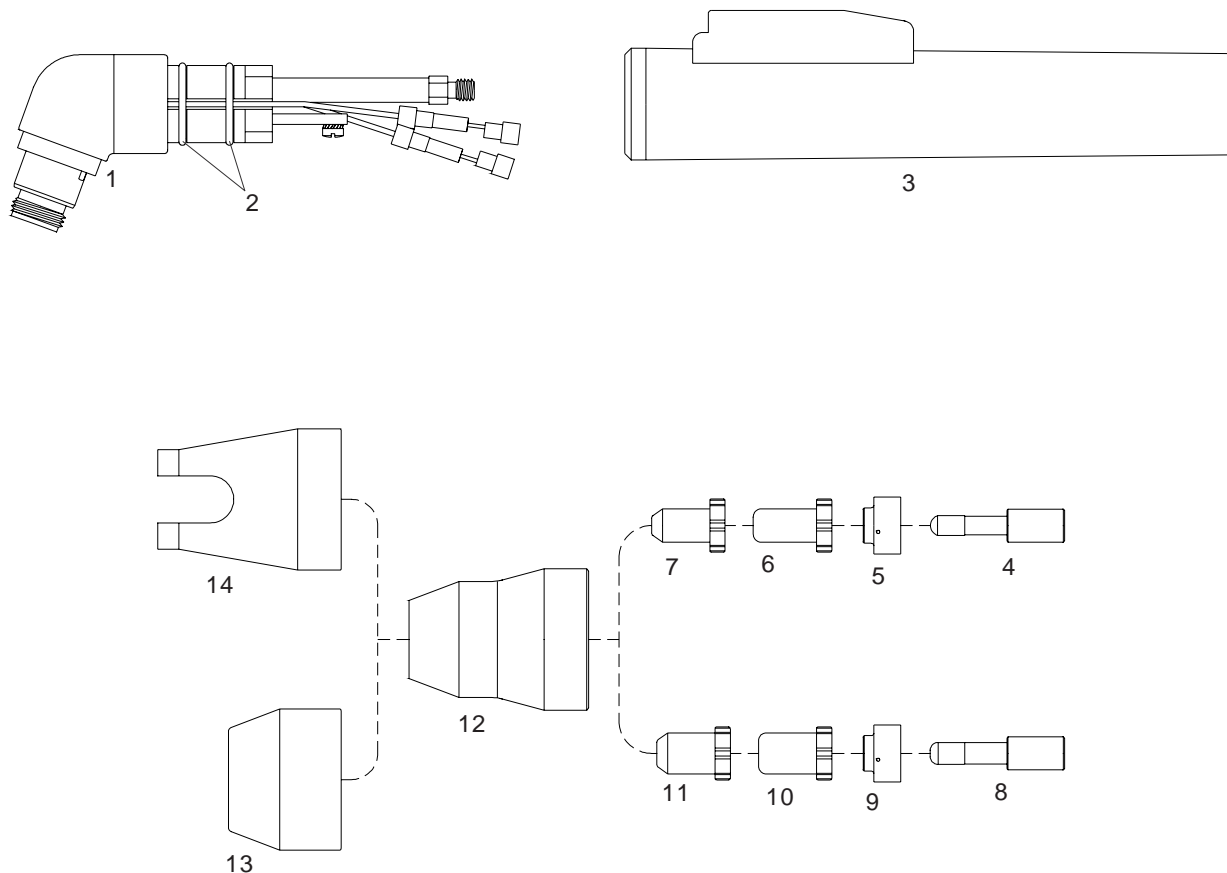
PCH/M-28 Pak Master 50XL



Item	Ref.	Code	Description
N/S	2-5801	07020	Hand torch complete with 25' (7.5 mts) cable
N/S	2-5802	07030	Hand torch complete with 50' (15 mts) cable
1	9-5807	07035	70° Torch head
2	8-0533	07100.53	O-Ring (20 pcs.)
3	9-6291E	07103	Handgrip complete with microswitch
4	9-6506	52523/D	Electrode - Hf (long life)
5	9-6507	60051	Gas Distributor (long life)
6	9-6500	51288	Tip - Standoff (long life)
7	9-6501	51289	Tip - Drag (long life)
8	9-6003	60347	Shield Cup - Std
9	9-6503	60339	Shield Cup - Maximum Life (requires 60347)
10	9-6004	60343	Shield Cup - Crown (requires 60347)
N/S	4-2995	07021	Air and power cable 25' (7.5 mts) - Hand torch
N/S	4-2996	07031	Air and power cable 50' (15 mts) - Hand torch

* CIRCLE CUTTING ATTACHMENT : See page #27

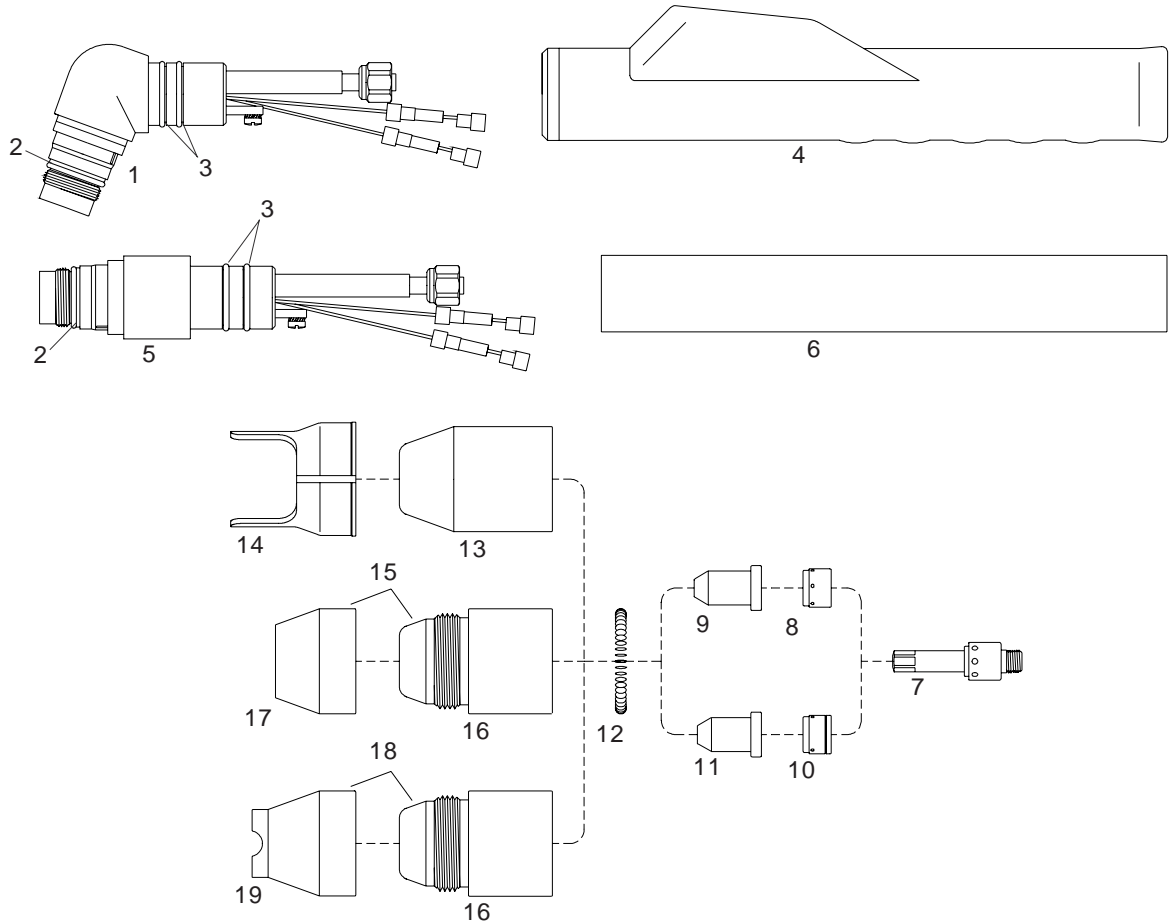
PCH/M-35 Pak Master 50, Stak Pak



Item	Ref.	Code	Description
1	9-5807	07035	70° Torch head
2	8-0533	07100.53	O-Ring (20 pcs.)
3	8-4305E	07103	Handgrip complete with microswitch
4	9-6006	52519/D	Electrode - Hf
5	9-6007	60050	Gas Distributor
6	9-6000	51290	Tip - 35 Amp. Air
	9-6002	51292	Tip - Gouging - Groove Air
7	9-6001	51291	Tip - Drag Cut Air
8	9-6506	52523/D	Electrode - Hf (long life)
9	9-6507	60051	Gas Distributor (long life)
10	9-6500	51288	Tip - Standoff (long life)
11	9-6501	51289	Tip - Drag (long life)
12	9-6003	60347	Shield Cup - Std
13	9-6503	60339	Shield Cup - Maximum Life (requires 60347)
14	9-6004	60343	Shield Cup - Crown (requires 60347)

* CIRCLE CUTTING ATTACHMENT : See page #27

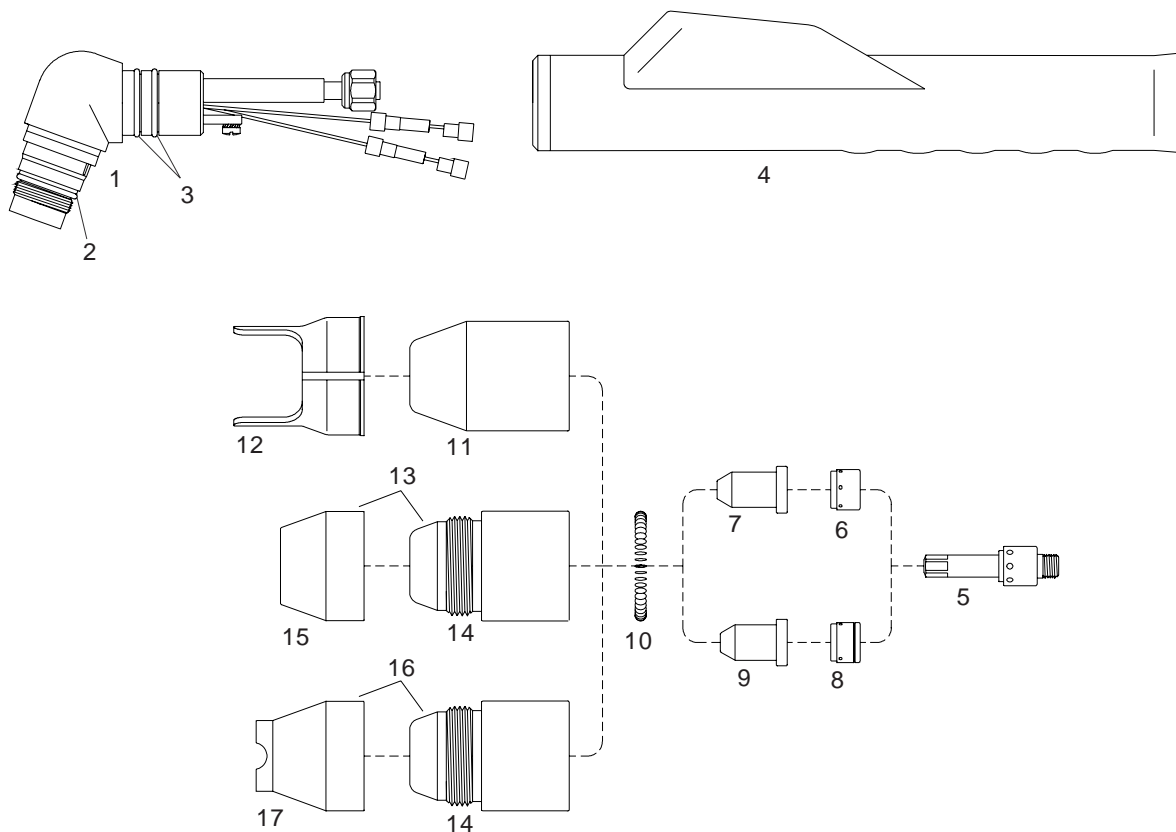
PCH/M-75 Pak Master 75, Pak Master 75XL, 625XR, Cut Master 80XL



Item	Ref.	Code	Description
N/S	2-7801	07060	Hand torch complete with 25' (7.5 mts) cable
N/S	2-7802	07070	Hand torch complete with 50' (15 mts) cable
N/S	2-7805	07080	Machine torch complete with 25' (7.5 mts) cable, (with handle item 6)
N/S	2-7806	07090	Machine torch complete with 50' (15 mts) cable, (with handle item 6)
1	8-7510	07075	70° Torch Head
2	8-0532	07300.60	O-Ring (Shield Cup), (20 pcs.)
3	8-0533	07100.53	O-Ring (Handle), (20 pcs.)
4	9-5636E	07106	Handgrip complete with microswitch (incl. 9-5636, 9-7502, 8-1322)
5	8-7512	07076	180° Torch Head
6	9-5637E	07115	Machine handle
7	8-7502	52526/D	Electrode, long life
8	8-7501	60055	Gas distributor, cutting
9	8-7503	51296	Tip, cutting 35A - ø 0,99 - .039
	8-7504	51297	Tip, cutting 55A - ø 1,17 - .046
10	8-7508	60056	Gas distributor, gouging
11	8-7506	51299	Tip, Gouging - ø 1,86 - .073
12	9-7501E	60442	Coil spring (10 pcs.)
13	8-7500	60440	Shield cup
14	8-7575	60444	Double pointed spacer
15	8-7496	60446	Shield cup maximum life, complete
16	8-7498	60441	Shield cup body
17	8-7497	60447	Heat shield (copper)
18	8-7507	60445	Crown shield cup assembly
19	8-7499	60443	Crown cup shield (copper)
N/S	4-7801	07063	Air and power cable 25' (7.5 mts) - Hand torch
N/S	4-7802	07073	Air and power cable 50' (15 mts) - Hand torch
N/S	4-7803	07083	Air and power cable 25' (7.5 mts) - Machine torch
N/S	4-7804	07093	Air and power cable 50' (15 mts) - Machine torch

* CIRCLE CUTTING ATTACHMENT : See page #27

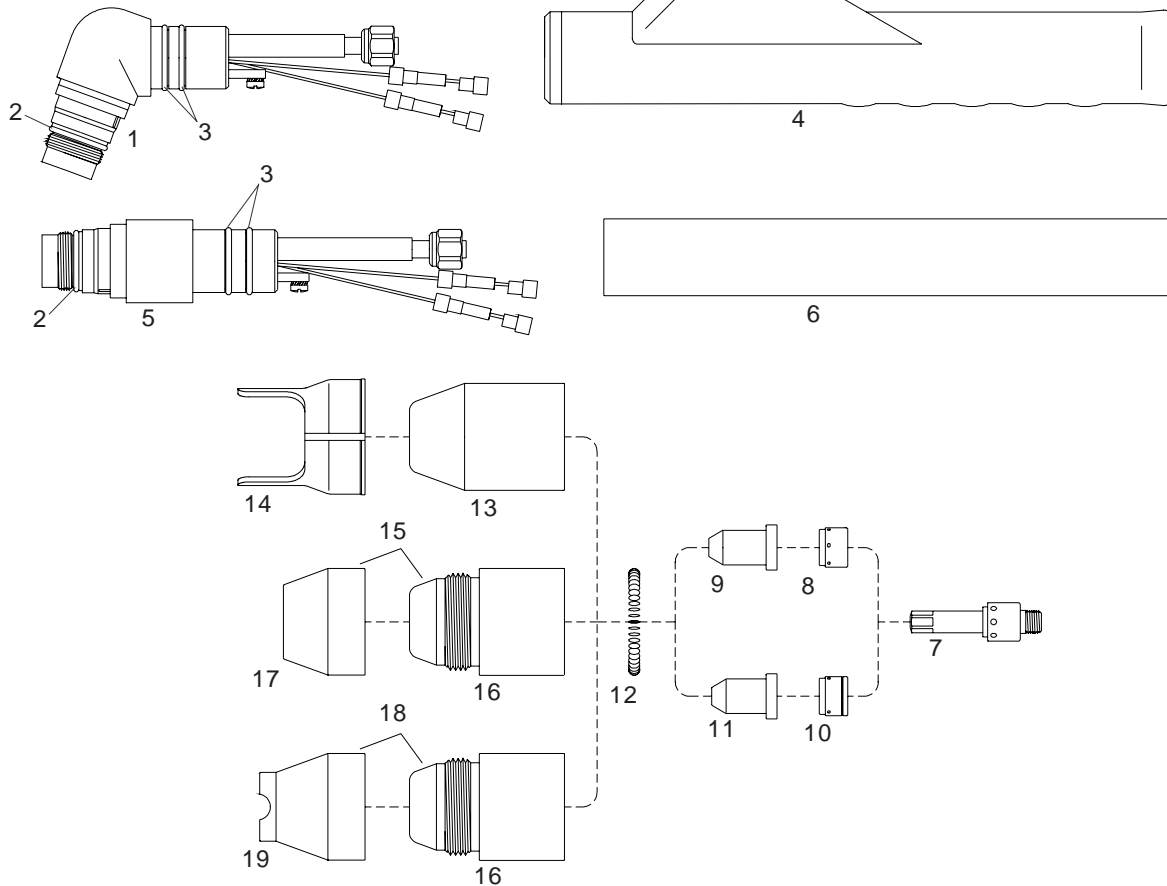
PCH/M-76 Econopak 100



Item	Ref.	Code	Description
NS	2-7811	07060	Hand torch complete with 25' (7.5 mts) cable
NS	2-7812	07070	Hand torch complete with 50' (15 mts) cable
1	8-7510	07075	70° Torch Head
2	8-0532	07300.60	O-Ring (Shield Cup), (20 pcs.)
3	8-0533	07100.53	O-Ring (Handle), (20 pcs.)
4	9-5636E	07106	Handgrip complete with microswitch (incl. 9-5636, 9-7502, 8-1322)
5	8-7502	52526/D	Electrode, long life
6	8-7501	60055	Gas distributor, cutting
7	8-7503	51296	Tip, cutting 35A - \varnothing 0,99 - .039
	8-7505	51298	Tip, cutting 60A - \varnothing 1,32 - .052
8	8-7508	60056	Gas distributor, gouging
9	8-7506	51299	Tip, Gouging - \varnothing 1,86 - .073
10	9-7501E	60442	Coil spring (10 pcs.)
11	8-7500	60440	Shield cup
12	8-7575	60444	Double pointed spacer
13	8-7496	60446	Shield cup maximum life, complete
14	8-7498	60441	Shield cup body
15	8-7497	60447	Heat shield (copper)
16	8-7507	60445	Crown shield cup assembly
17	8-7499	60443	Crown cup shield (copper)
NS	4-7611	07063	Air and power cable 25' (7.5 mts) - Hand torch
NS	4-7612	07073	Air and power cable 50' (15 mts) - Hand torch

* CIRCLE CUTTING ATTACHMENT : See page #27

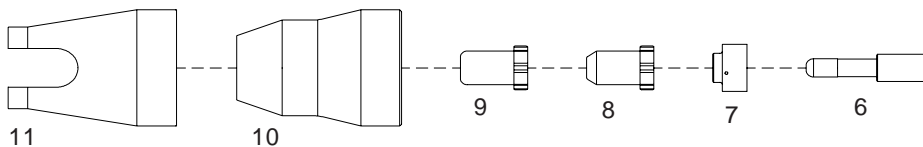
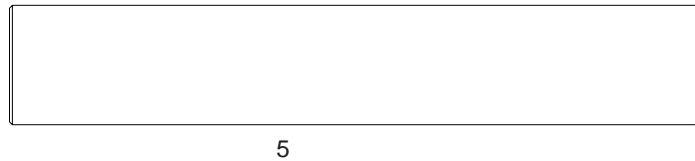
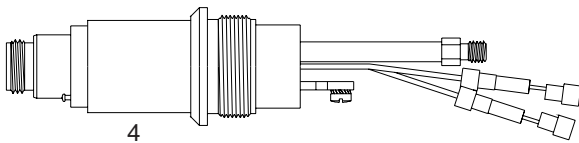
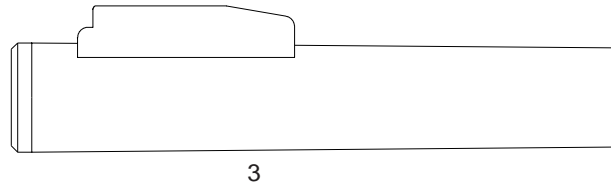
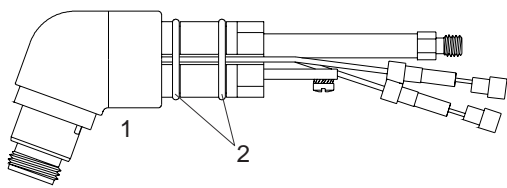
PCH/M-100XL Pak Master 100XL



Item	Ref.	Code	Description
N/S	2-0801	07060	Hand torch complete with 25' (7.5 mts) cable
N/S	2-0802	07070	Hand torch complete with 50' (15 mts) cable
N/S	2-0805	07080	Machine torch complete with 25' (7.5 mts) cable, (with handle item 6)
N/S	2-0806	07090	Machine torch complete with 50' (15 mts) cable, (with handle item 6)
1	8-7510	07075	70° Torch Head
2	8-0532	07300.60	O-Ring (Shield Cup), (20 pcs.)
3	8-0533	07100.53	O-Ring (Handle), (20 pcs.)
4	9-5636E	07106	Handgrip complete with microswitch (incl. 9-5636, 9-7502, 8-1322)
5	8-7512	07076	180° Torch Head
6	9-5637E	07115	Machine handle
7	8-7502	52526/D	Electrode, long life
8	8-7501	60055	Gas distributor, cutting
9	8-7503	51296	Tip, cutting 35A - ø 0,99 - .039
	8-7504	51297	Tip, cutting 55A - ø 1,17 - .046
	8-7505	51298	Tip, cutting 70A - ø 1,32 - .052
10	8-7508	60056	Gas distributor, gouging
11	8-7506	51299	Tip, Gouging - ø 1,86 - .073
12	9-7501E	60442	Coil spring (10 pcs.)
13	8-7500	60440	Shield cup
14	8-7575	60444	Double pointed spacer
15	8-7496	60446	Shield cup maximum life, complete
16	8-7498	60441	Shield cup body
17	8-7497	60447	Heat shield (copper)
18	8-7507	60445	Crown shield cup assembly
	8-7499	60443	Crown cup shield (copper)
N/S	4-0810	07063	Air and power cable 25' (7.5 mts) - Hand torch
N/S	4-0811	07073	Air and power cable 50' (15 mts) - Hand torch
N/S	4-0812	07083	Air and power cable 25' (7.5 mts) - Machine torch
N/S	4-0813	07093	Air and power cable 50' (15 mts) - Machine torch

* CIRCLE CUTTING ATTACHMENT : See page #27

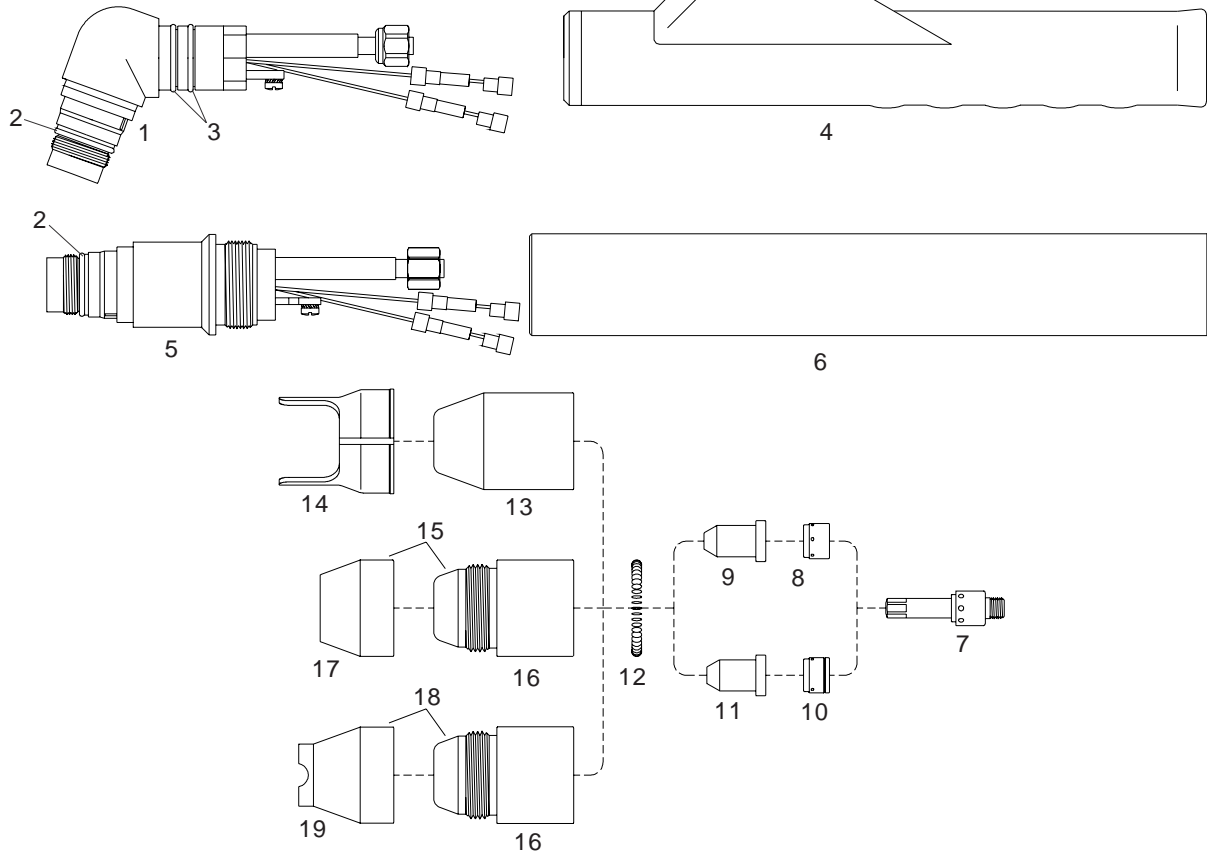
PCH/M-40 Pak Master 50XL Plus



Item	Ref.	Code	Description
NS	2-5035	07022	Hand torch complete with 25' (7.5 mts) cable
NS	2-5036	07032	Hand torch complete with 50' (15 mts) cable
NS	2-5039	07042	Machine torch complete with 25' (7.5 mts) cable
NS	2-5040	07052	Machine torch complete with 50' (15 mts) cable
1	9-8055	07037	70° Torch head
2	8-0533	07100.53	O-Ring (20 pcs.)
3	9-8059	07103	Handgrip complete with microswitch
4	9-8053	07038	180° Torch head
5	9-7833	07215	Machine handle
6	9-6506	52523/D	Electrode - Hf (long life)
7	9-6507	60051	Gas Distributor (long life)
8	9-6501	51289	Tip - Drag (long life)
9	9-6500	51288	Tip - Standoff (long life)
	9-6502	51288.12	Tip - Gouging
10	9-6003	60347	Shield Cup - Std
11	9-6004	60343	Shield Cup - Crown (requires 9-6003)
NS	4-0815	07023	Air and power cable 25' (7.5 mts) - Hand torch
NS	4-0816	07033	Air and power cable 50' (15 mts) - Hand torch
NS	4-2897	07043	Air and power cable 25' (7.5 mts) - Machine torch
NS	4-2898	07053	Air and power cable 50' (15 mts) - Machine torch

* CIRCLE CUTTING ATTACHMENT : See page #27

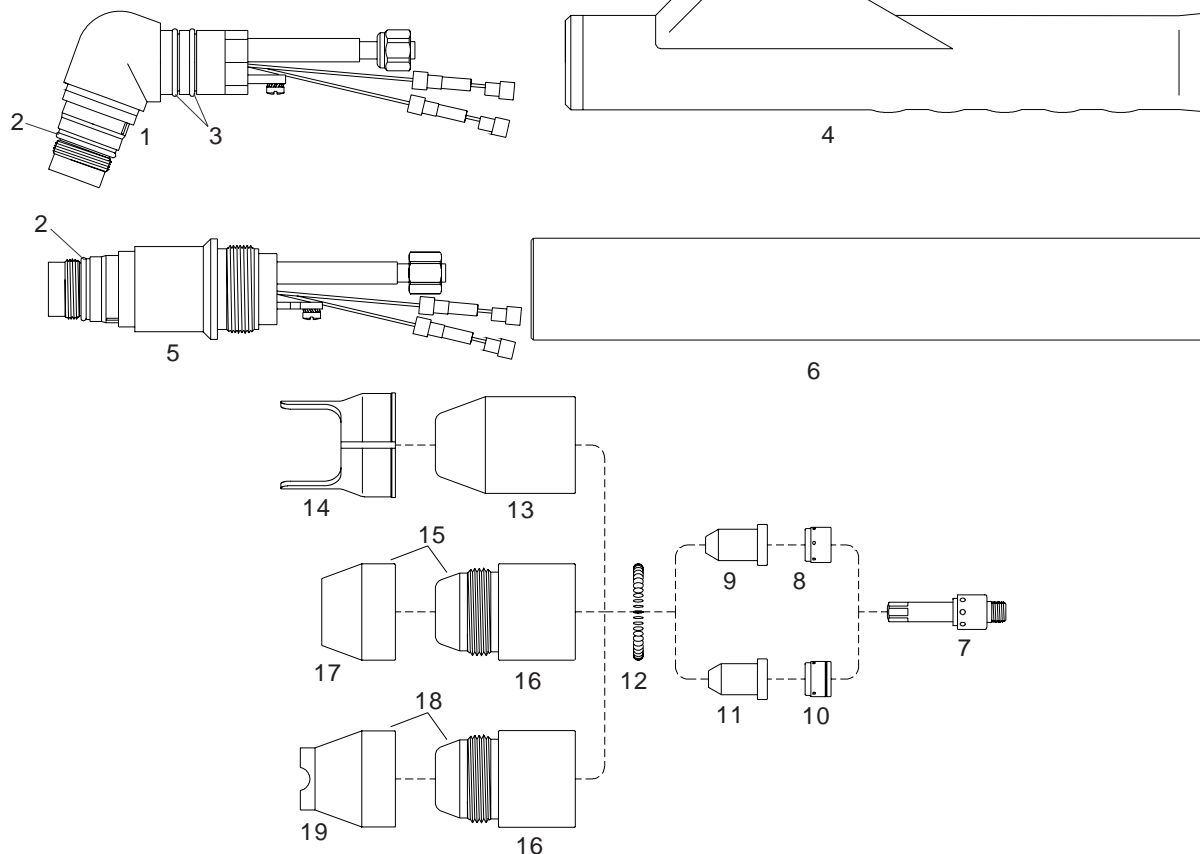
PCH/M-60 Pak Master 75XL Plus



Item	Ref.	Code	Description
N/S	2-6660	07061	Hand torch complete with 25' (7.5 mts) cable
N/S	2-6661	07071	Hand torch complete with 50' (15 mts) cable
N/S	2-6664	07081	Machine torch complete with 25' (7.5 mts) cable
N/S	2-6665	07091	Machine torch complete with 50' (15 mts) cable
1	9-8075	07077	70° Torch Head
2	8-0533	07100.53	O-Ring (Handle), (20 pcs.)
3	8-0532	07300.60	O-Ring (Shield Cup), (20 pcs.)
4	9-8066	07106	Handgrip complete with microswitch
5	9-8073	07078	180° Torch Head
6	9-7833	07215	Machine handle
7	8-7502	52526/D	Electrode, long life
8	8-7501	60055	Gas distributor, cutting
9	8-7503	51296	Tip, cutting 35A - \varnothing 0,99 - .039
	9-7726	51297.13	Tip, cutting 60A - \varnothing 1,24 - .049
10	8-7508	60056	Gas distributor, gouging
11	8-7506	51299	Tip, Gouging - \varnothing 1,86 - .073
12	9-7501E	60442	Coil spring (10 pcs.)
13	8-7500	60440	Shield cup
14	8-7575	60444	Double pointed spacer
15	8-7496	60446	Shield cup maximum life, complete
16	8-7498	60441	Shield cup body
17	8-7497	60447	Heatshield (copper)
18	8-7507	60445	Crown shield cup assembly
19	8-7499	60443	Crown cup shield (copper)
N/S	4-0819	07063	Air and power cable 25' (7.5 mts) - Hand torch
N/S	4-0820	07073	Air and power cable 50' (15 mts) - Hand torch
N/S	4-7502	07083	Air and power cable 25' (7.5 mts) - Machine torch
N/S	4-7503	07093	Air and power cable 50' (15 mts) - Machine torch

* CIRCLE CUTTING ATTACHMENT : Seepage#27

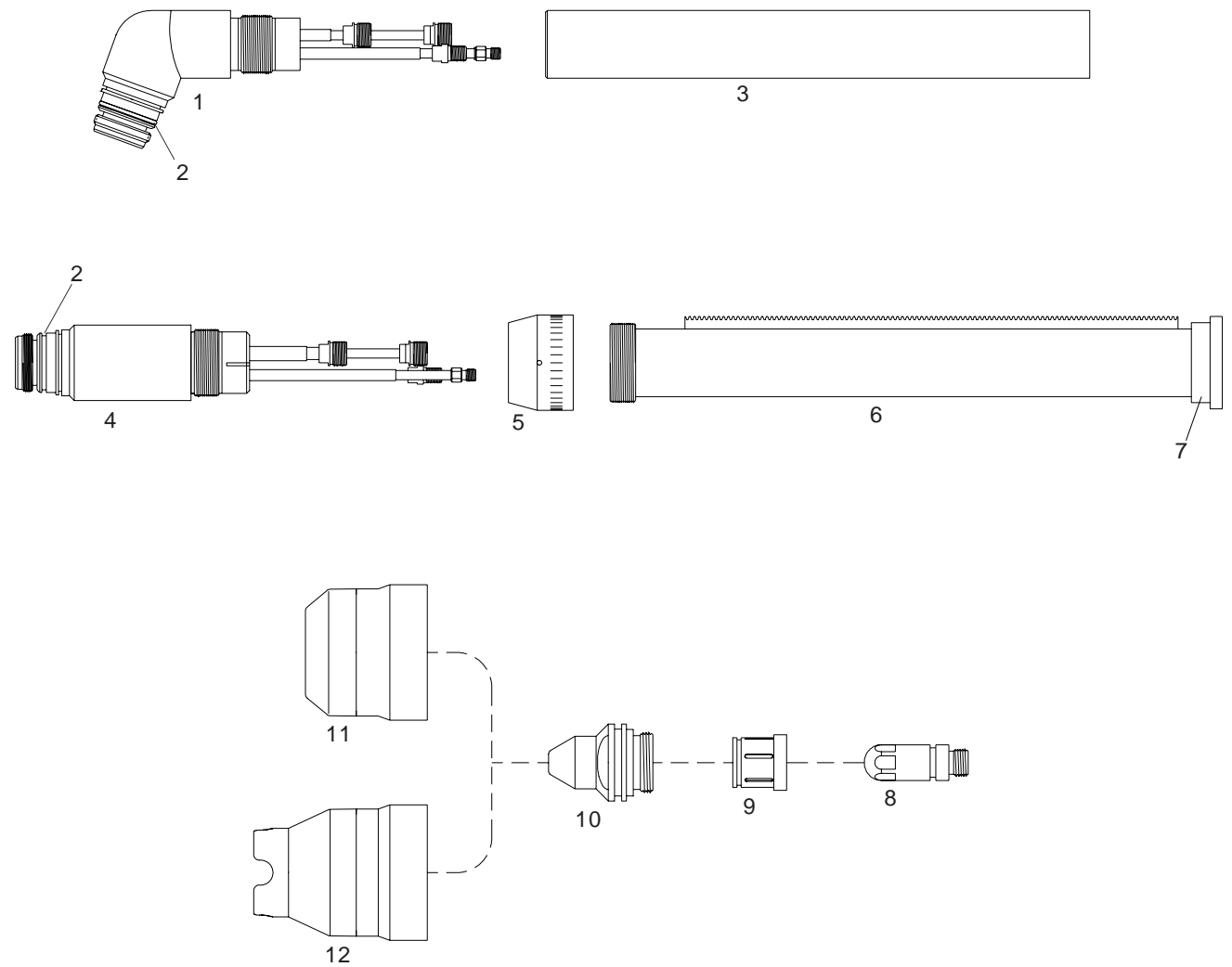
PCH/M-80 Pak Master 100XL Plus



Item	Ref.	Code	Description
NS	2-0080	07062	Hand torch complete with 25' (7.5 mts) cable
NS	2-0081	07072	Hand torch complete with 50' (15 mts) cable
NS	2-0084	07082	Machine torch complete with 25' (7.5 mts) cable
NS	2-0085	07092	Machine torch complete with 50' (15 mts) cable
1	9-8075	07077	70° Torch Head
2	8-0532	07300.60	O-Ring (Shield Cup), (20 pcs.)
3	8-0533	07100.53	O-Ring (Handle), (20 pcs.)
4	9-8066	07106	Handgrip complete with microswitch
5	9-8073	07078	180° Torch Head
6	9-7833	07215	Machine handle
7	8-7502	52526/D	Electrode, long life
8	8-7501	60055	Gas distributor, cutting
9	8-7503	51296	Tip, cutting 35A - \varnothing 0,99 - .039
	8-7504	51297	Tip, cutting 55A - \varnothing 1,17 - .046
	9-7728	51298.14	Tip, cutting 80A - \varnothing 1,39 - .055
10	8-7508	60056	Gas distributor, gouging
11	8-7506	51299	Tip, Gouging - \varnothing 1,86 - .073
12	9-7501E	60442	Coil spring (10 pcs.)
13	8-7500	60440	Shield cup
14	8-7575	60444	Double pointed spacer
15	8-7496	60446	Shield cup maximum life, complete
16	8-7498	60441	Shield cup body
17	8-7497	60447	Heat shield (copper)
18	8-7507	60445	Crown shield cup assembly
19	8-7499	60443	Crown cup shield (copper)
NS	4-0823	07064	Air and power cable 25' (7.5 mts) - Hand torch
NS	4-0824	07074	Air and power cable 50' (15 mts) - Hand torch
NS	4-0012	07084	Air and power cable 25' (7.5 mts) - Machine torch
NS	4-0013	07094	Air and power cable 50' (15 mts) - Machine torch

* CIRCLE CUTTING ATTACHMENT : See page #27

PCH/M-120 Pak Master 150XL

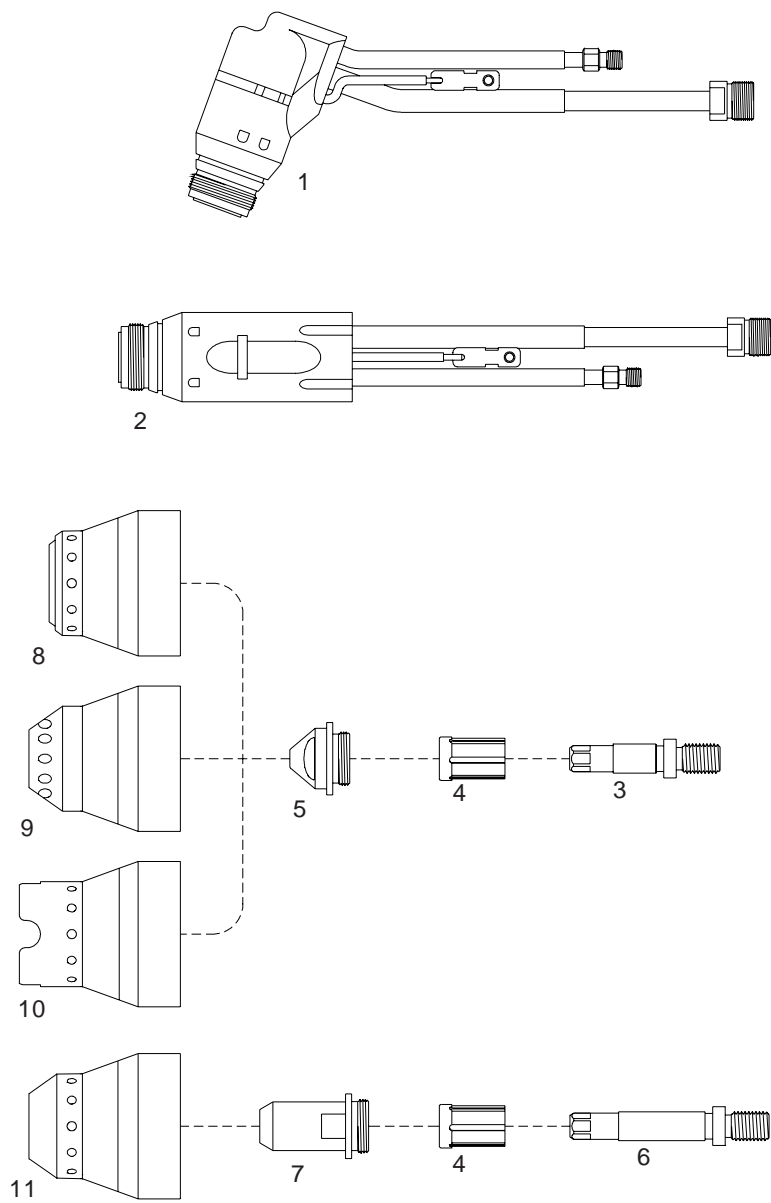


Item	Ref.	Code	Description
1	9-7830	TD97830	70° Torch Head
N/S	9-7831	TD97831	90° Torch Head
2	8-0538	TD80538	O-Ring (10 pcs.)
3	9-7833	07215	Handle
4	9-6410	TD96410	180° Torch Head
5	8-2158	TD82158	Adaptor
6	7-3207	TD73207	Positioning tube
7	8-4204	TD84204	Endcap
8	20-1210	52612	Electrode Air - Cutting
	20-1211	TD201211	Electrode Multi Gas - Cutting
9	20-1215	TD201215	Gas Distributor - Cutting
10	20-1220	51360	Tip 35A
	20-1221	51361	Tip 70A
	20-1222	51362	Tip 120A
11	20-1225	TD201225	Shield Cup - Std.
12	20-1226	TD201226	Shield Cup - Crown

* CIRCLE CUTTING ATTACHMENT : See page #27

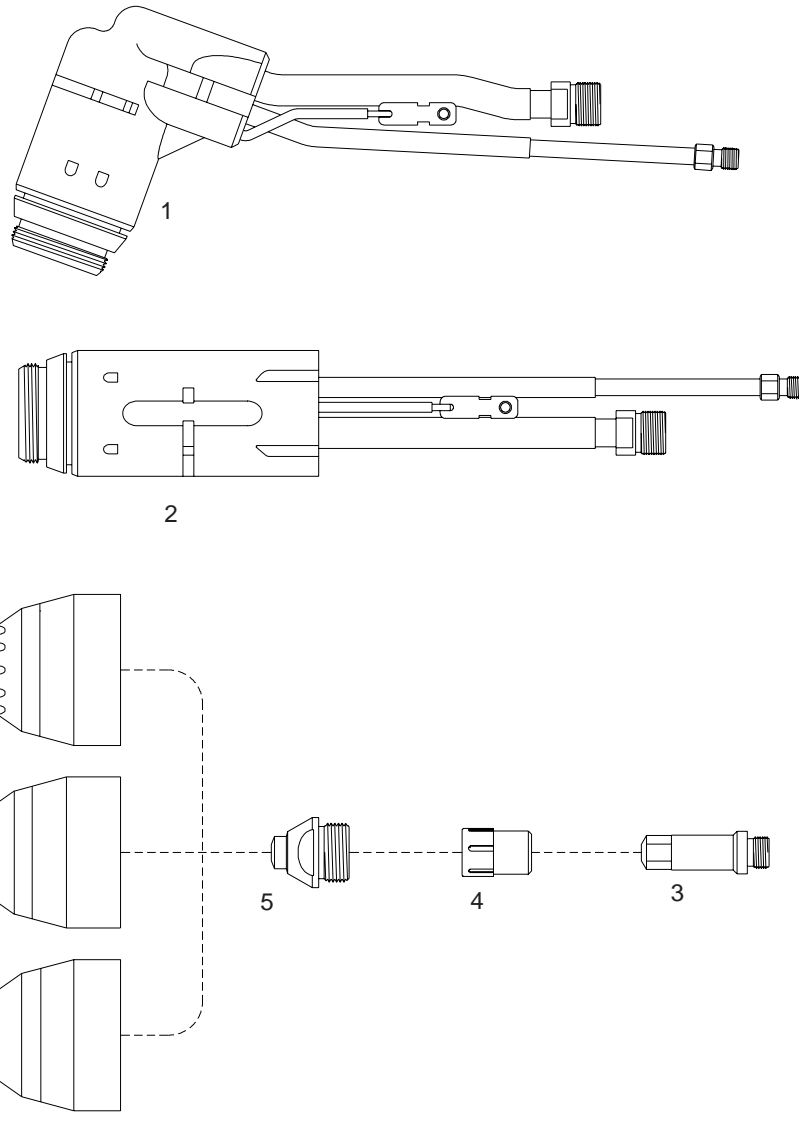
Amprocorp USA, Inc. is in no way affiliated with THERMAL DYNAMICS®. The parts advertised for sale are not genuine THERMAL DYNAMICS® parts, but are parts made for and by Amprocorp USA, Inc. Reference to THERMAL DYNAMICS® machine, torches and numbers are for your convenience only. We reserve the right to substitute genuine THERMAL DYNAMICS® parts in place of Amprocorp USA, Inc. parts.

PCH/M-70 Stak Pak



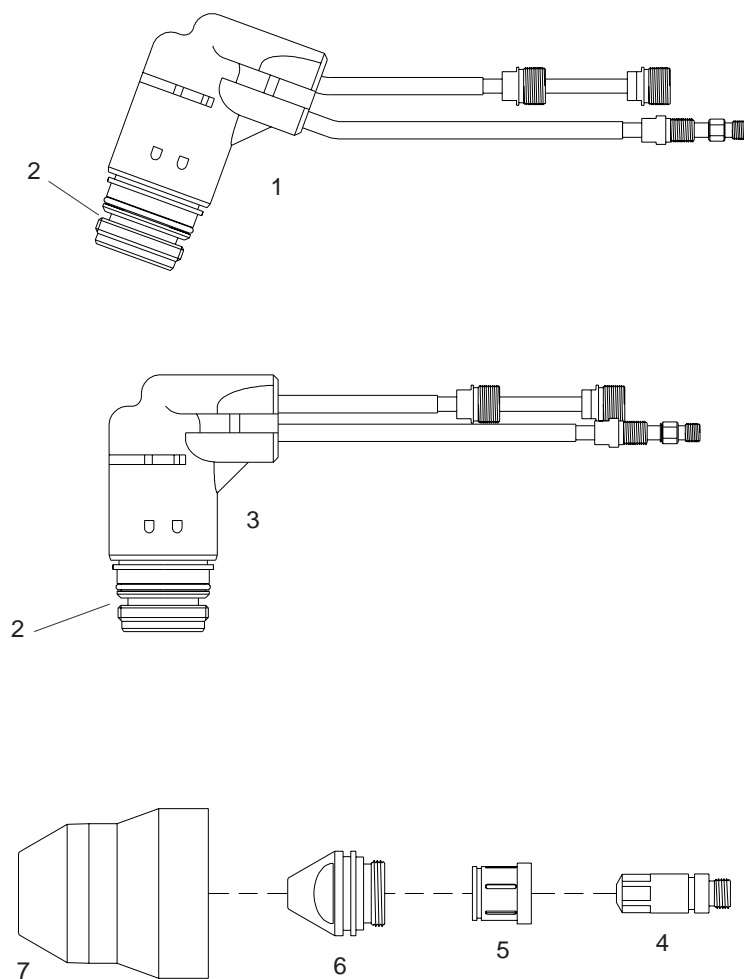
Item	Ref.	Code	Description
1	9-5810	TD95810	70° Torch Head
2	9-5812	TD95812	180° Torch Head
3	9-6019	52524/A	Electrode - Cutting, Air/N2/O2
4	9-6022	TD96022	Gas Distributor
5	9-6008	51294	Tip - Cutting 35A Air/N2/O2
	9-6009	51295	Tip - Cutting 70A Air/N2/O2
	9-6013	TD96013	Tip - Cutting 70A Ar/H2
6	9-6107	TD96107	Electrode - Gouging, Air/N2/O2
7	9-6014	TD96014	Tip - Gouging .089
	9-6015	TD96015	Tip - Gouging .104
	9-6109	TD96109	Tip - Gouging .125
8	9-6016	60345	Shield Cup - Standoff - Std.
9	9-6024	TD96024	Shield Cup - Standoff - Long
10	9-6017	60346	Shield Cup - Crown
11	9-6018	60344	Shield Cup - Gouging

PCH/M-140 Stak Pak



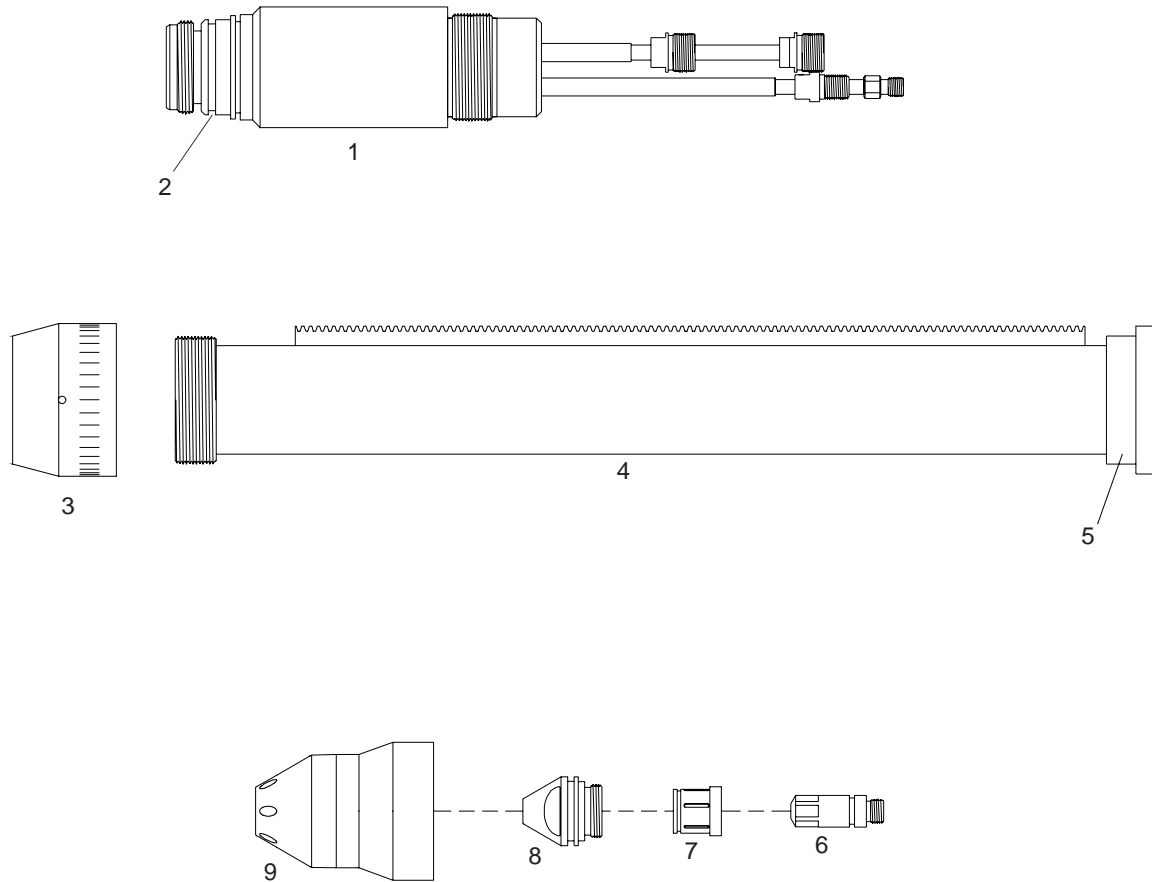
Item	Ref.	Code	Description
1	9-5813	TD95813	70° Torch Head
N/S	9-5814	TD95814	90° Torch Head
2	9-5815	TD95815	180° Torch Head
3	9-6048	52608	Electrode - Cutting, Air/N2/O2
4	9-6051	TD96051	Gas Distributor - Cutting
5	9-6025	51585	Tip - Cutting 35A Air/N2
	9-6026	51586	Tip - Cutting 70A Air/N2
	9-6027	51587	Tip - Cutting 105A Air/N2
	9-6028	51588	Tip - Cutting 140A Air/N2
	9-6034	TD96034	Tip - Cutting 70A Ar/H2
	9-6035	TD96035	Tip - Cutting 105A Ar/H2
	9-6036	TD96036	Tip - Cutting 140A Ar/H2
6	9-6045	TD96045	Shield Cup - Standoff - Std.
7	9-6054	TD96054	Shield Cup - Standoff - Long
8	9-6046	TD96046	Shield Cup - Crown

PCH-145 Stak Pak



Item	Ref.	Code	Description
1	9-5816	TD95816	70° Torch Head
2	8-0538	TD80538	O-Ring (10 pcs.)
3	9-5817	TD95817	90° Torch Head
4	9-6078	TD96078	Electrode - Cutting, Air
	9-6129	TD96129	Electrode - Cutting, N2
	9-6080	TD96080	Electrode - Cutting, Ar/H2
5	9-6081	TD96081	Gas Distributor - Cutting
6	9-6055	TD96055	Tip - Cutting 35A Air/N2
	9-6056	51370.13	Tip - Cutting 70A Air/N2
	9-6057	51370.15	Tip - Cutting 105A Air/N2
	9-6058	51370.17	Tip - Cutting 140A Air/N2
	9-6064	TD96064	Tip - Cutting 70A Ar/H2
	9-6065	TD96065	Tip - Cutting 105A Ar/H2
	9-6066	TD96066	Tip - Cutting 140A Ar/H2
7	9-6075	TD96075	Shield Cup - Standoff - Std.

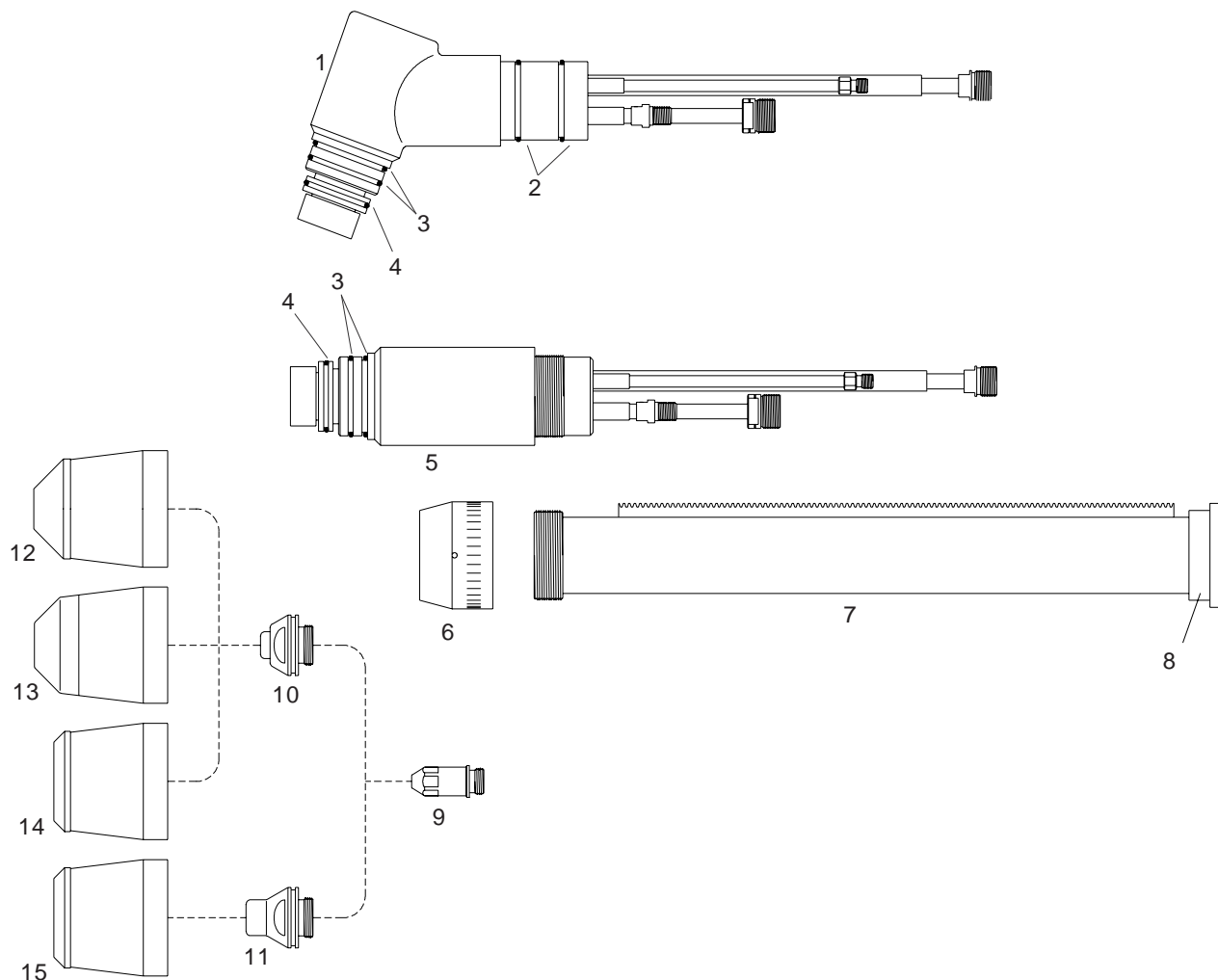
PCM-145 Stak Pak, TD750, Merlin 3000, Pak 15XC w/Max 300 retrofit



Item	Ref.	Code	Description
1	9-6410	TD96410	180° Torch Head
2	8-0538	TD80538	O-Ring (10 pcs.)
3	8-2158	TD82158	Adaptor
4	7-3207	TD73207	Positioning Tube
5	8-4204	TD84204	End Cap
6	20-1018	TD201018	Electrode Air/O2
	20-1023	TD201023	Electrode N2 (replaces TD96431)
	20-1025	TD201025	Electrode Ar/H2 (replaces TD96427)
7	9-6416	TD96416	Gas Distributor
8	9-6424	51370.13	Tip Cutting 70A Air/N2
	9-6425	51370.15	Tip Cutting 105A Air/N2
	9-6426	51370.17	Tip Cutting 140A Air/N2
	9-6419	TD96419	Tip Cutting 70A O2
	9-6420	TD96420	Tip Cutting 105A O2
	9-6421	TD96421	Tip Cutting 140A O2
	9-6428	TD96428	Tip Cutting 70A Ar/H2
	9-6429	TD96429	Tip Cutting 105A Ar/H2
	9-6430	TD96430	Tip Cutting 140A Ar/H2
9	9-6411	TD96411	Shield Cup - Standoff - Long O2
	9-6412	TD96412	Shield Cup - Standoff - Long Air/N2 Ar/H2

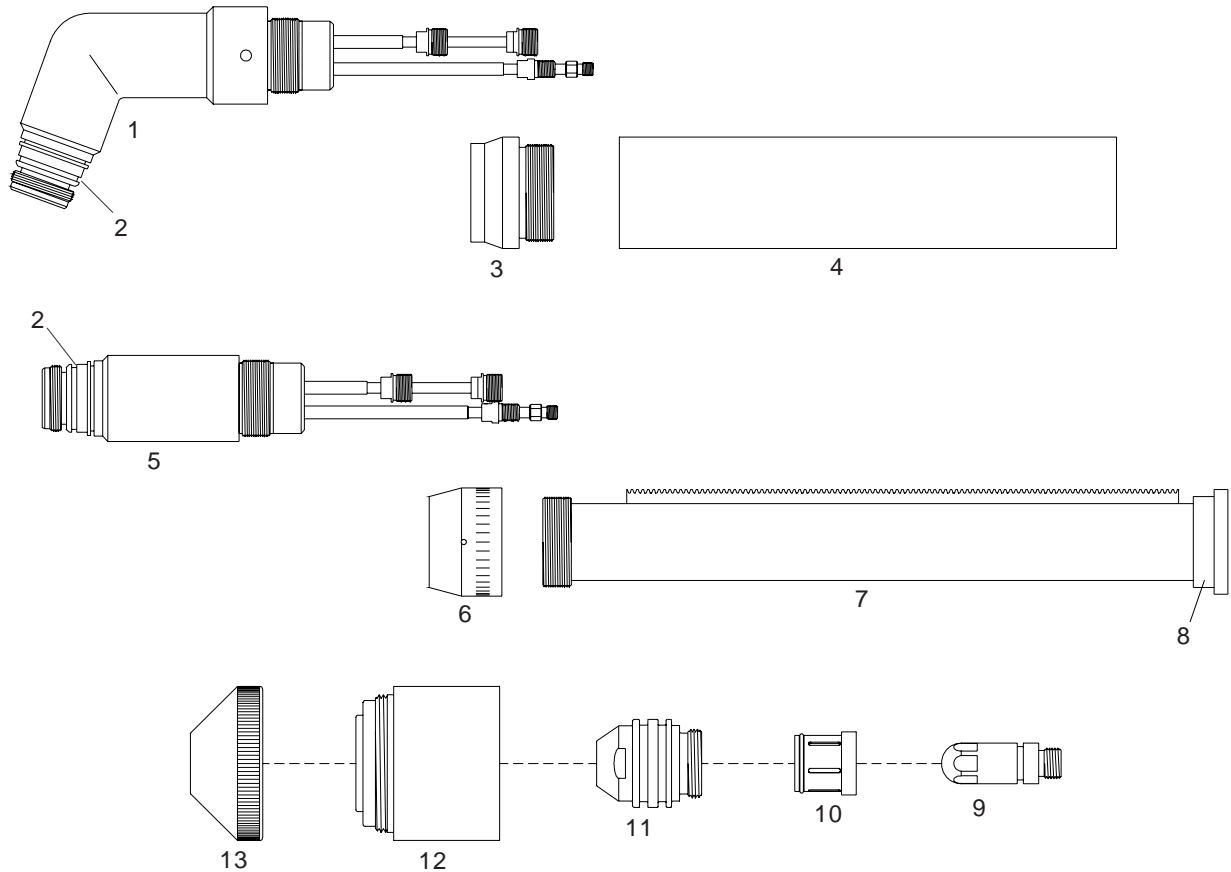
Amprocorp USA, Inc. is in no way affiliated with THERMAL DYNAMICS®. The parts advertised for sale are not genuine THERMAL DYNAMICS® parts, but are parts made for and by Amprocorp USA, Inc. Reference to THERMAL DYNAMICS® machine, torches and numbers are for your convenience only. We reserve the right to substitute genuine THERMAL DYNAMICS® parts in place of Amprocorp USA, Inc. parts.

PCH/M-150 Pak 15XC



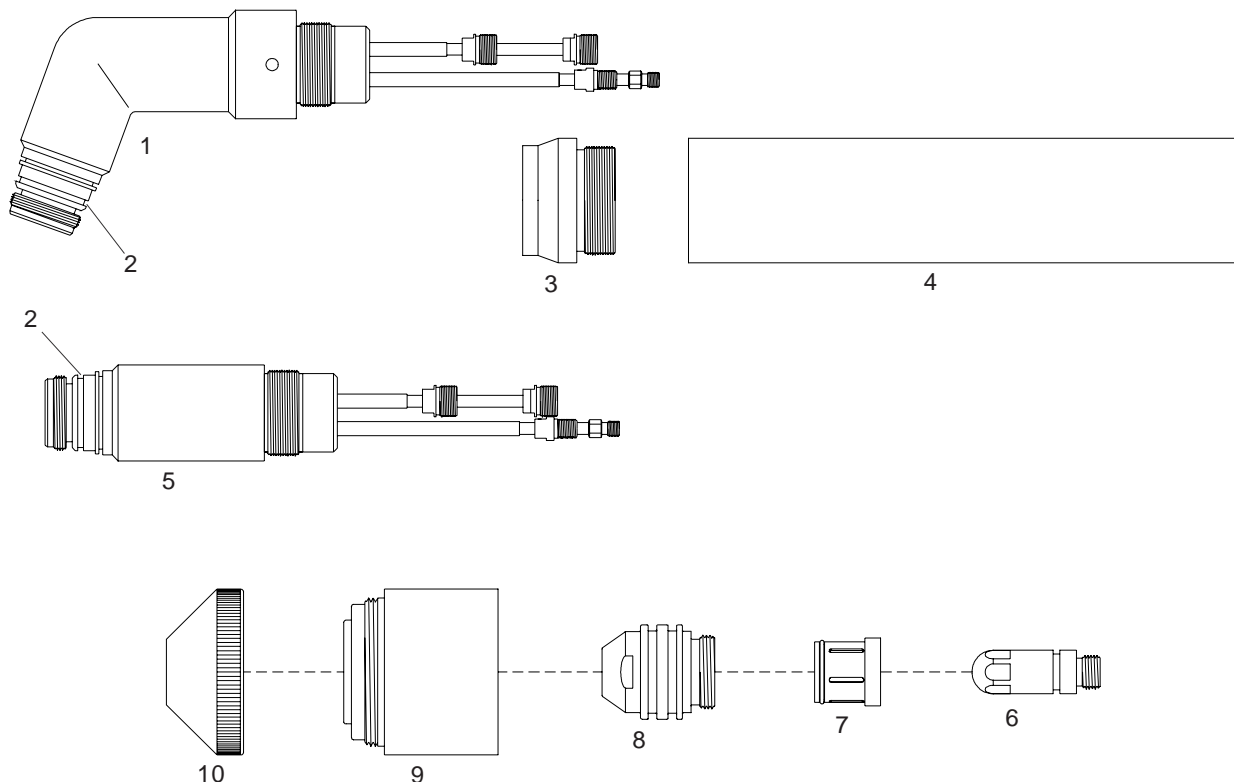
Item	Ref.	Code	Description
1	9-5743	TD95743	70° Torch Head
N/S	9-5744	TD95744	90° Torch Head
2	8-5570	TD85570	O-Ring (Handle), (10 pcs.)
3	8-0540	TD80540	O-Ring (Shield Cup, Lg.), (10 pcs.)
4	8-0537	TD80537	O-Ring (Shield Cup, Sm.), (10 pcs.)
5	9-5745	TD95745	180° Torch Head
6	8-2158	TD82158	Adaptor
7	7-3207	TD73207	Positioning Tube
8	8-4204	TD84204	End Cap
9	9-5749	52610	Electrode - Air
	9-5760	52611	Electrode - O2
	9-5754	TD95754	Electrode - N2, Ar - H2
10	9-5748	51580	Tip ø 1,09 - .043 - 50A Air
	9-5747	51581	Tip ø 1,40 - .055 - 100A Air
	9-5746	51582	Tip ø 1,78 - .070 - 150A Air
	9-5753	51365	Tip 50A O2
	9-5752	51366	Tip 100A O2
	9-5751	51367	Tip 150A O2
	9-5765	TD95765	Tip 50A N2
	9-5766	TD95766	Tip 100A N2
	9-5767	TD95767	Tip 150A N2
	9-5775	TD95775	Tip 150A Ar/H2
11	9-5756	TD95756	Tip - Gouging 85A .078
	9-5755	TD95755	Tip - Gouging 150A .120
12	9-5750	60390	Shield Cup - Ceramic Front
13	9-5790	60393	Shield Cup - Std. - Metal Front
14	9-5801	TD95801	Shield Cup - Copper (Tip Exp.)
	9-5758	60391	Shield Cup - Ceramic (Tip Exp.)
15	9-5774	60392	Shield Cup - Gouging

Maximizer 300 Merlin 1000



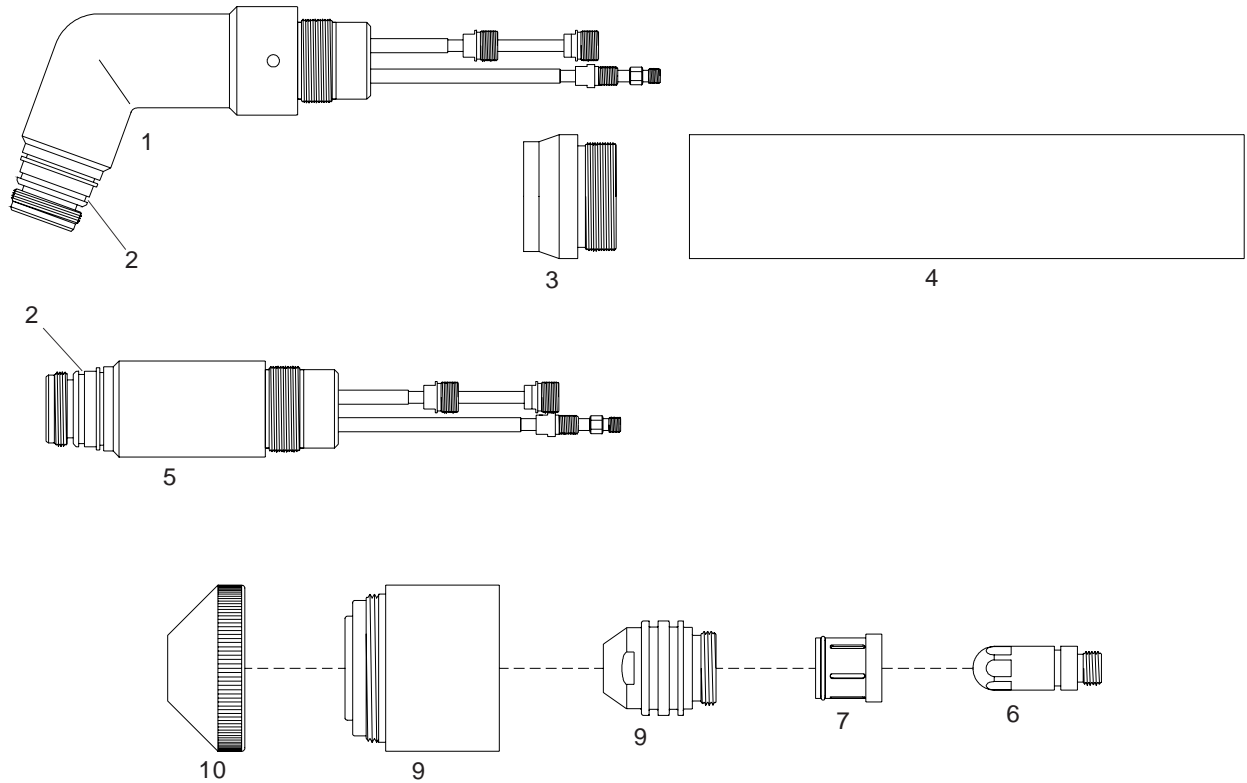
Item	Ref.	Code	Description
1	9-6457	TD96457	70° Torch Head
NS	9-6459	TD96459	90° Torch Head
2	8-0538	TD80538	O-Ring (10 pcs.)
3	9-6767	TD96767	Adaptor
4	9-6769	TD96769	Mounting Tube
5	9-6410	TD96410	180° Torch Head
6	8-2158	TD82158	Adaptor
7	7-3207	TD73207	Positioning Tube
8	8-4204	TD84204	End Cap
9	20-1016	TD201016	Electrode O2
	20-1018	TD201018	Electrode Air
	20-1023	TD201023	Electrode N2
	20-1025	TD201025	Electrode Ar/H2
10	20-0008	TD200008	Gas Distributor 50-225A
11	20-1030	51350	Tip 50A O2/N2/Air
	20-1031	51351	Tip 100A O2/N2/Air
	20-1034	51354	Tip 300A
12	20-1002	60396	Shield Cup Body
	20-1029	60397	Shield Cup Body, Underwater
13	20-1003	51990	End Cup 50A
	20-1004	51991	End Cup 100A
	20-1028	TD201028	End Cup, Underwater
SQUARE CUT, 50A, O₂-O₂ CONSUMABLES			
9	20-1050	TD201050	Electrode Cutting O2
10	20-0008	TD200008	Gas Distributor, Cutting
11	20-1051	TD201051	Tip Cutting 50A
12	20-1002	60396	Shield Cup Body
13	20-1052	TD201052	Shield Cup End Cup, 50A

Maximizer 300 Merlin 3000, Merlin 6000



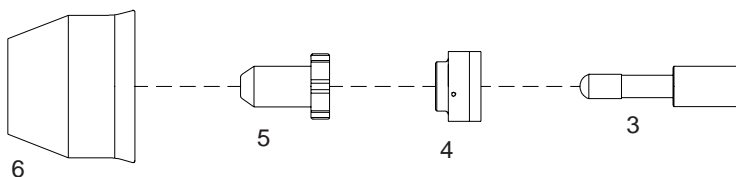
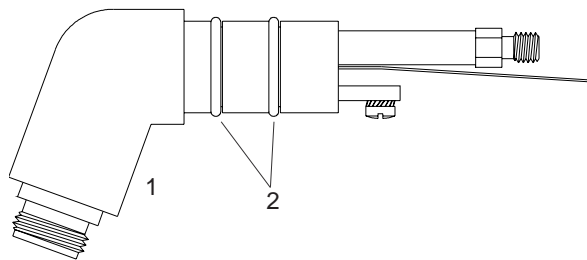
Item	Ref.	Code	Description
1	9-6457	TD96457	70° Torch Head
N/S	9-6459	TD96459	90° Torch Head
2	8-0538	TD80538	O-Ring (10 pcs.)
3	9-6767	TD96767	Adaptor
4	9-6769	TD96769	Mounting Tube
5	9-6410	TD96410	180° Torch Head
6	20-1010	TD201010	Electrode O2 100-225A
	20-1015	TD201015	Electrode O2 100A
	20-1016	TD201016	Electrode O2 150A
	20-1017	TD201017	Electrode O2 225A
	20-1018	TD201018	Electrode Air 50-225A
	20-1021	TD201021	Electrode Air/O2 300A
	20-1023	TD201023	Electrode N2 50-300A
	20-1025	TD201025	Electrode Ar/H2 100-300A
	20-1050	TD201050	Electrode - Cutting O2
7	20-0008	TD200008	Gas Distributor 50-225A
	20-1009	TD201009	Gas Distributor 300A
8	20-1030	51350	Tip 50A
	20-1031	51351	Tip 100A
	20-1032	51352	Tip 150A
	20-1033	51353	Tip 225A
	20-1034	51354	Tip 300A
9	20-1002	60396	Shield Cup Body
	20-1029	60397	Shield Cup Body, Underwater (Merlin 6000 only)
10	20-1003	51990	End Cup 50A
	20-1004	51991	End Cup 100-225A
	20-1005	51992	End Cup 300A
	20-1006	51993	End Cup, Underwater, 100-300A
	20-1007	TD201007	End Cup, Non-Conductive
	20-1028	TD201028	End Cup, Underwater (Merlin 6000 only)

Maximizer 300 Merlin 6000 GST



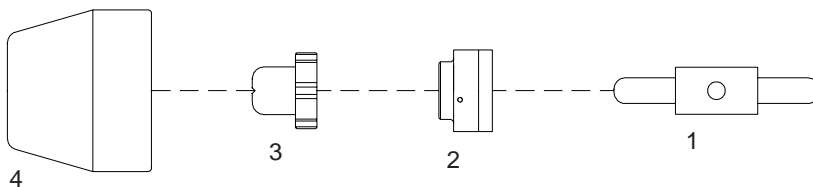
Item	Ref.	Code	Description
1	9-6457	TD96457	70° Torch Head
NS	9-6459	TD96459	90° Torch Head
2	8-0538	TD80538	O-Ring (10 pcs.)
3	9-6767	TD96767	Adaptor
4	9-6769	TD96769	Mounting Tube
5	9-6410	TD96410	180° Torch Head
6	20-1010	TD201010	Electrode O2 100-225A
	20-1018	TD201018	Electrode Air 50-225A
	20-1021	TD201021	Electrode Air/O2 300A
	20-1023	TD201023	Electrode N2 50-300A
	20-1025	TD201025	Electrode Ar/H2 100-300A
7	20-0008	TD200008	Gas Distributor 50-225A
	20-1009	TD201009	Gas Distributor 300A
8	20-1030	51350	Tip 50A
	20-1031	51351	Tip 100A
	20-1032	51352	Tip 150A
	20-1033	51353	Tip 225A
	20-1034	51354	Tip 300A
9	20-1002	60396	Shield Cup Body
	20-1029	60397	Shield Cup Body, Underwater
10	20-1003	51990	End Cup 50A
	20-1004	51991	End Cup 100-225A
	20-1005	51992	End Cup 300A
	20-1006	51993	End Cup, Underwater, 100-300A
	20-1007	TD201007	End Cup, Non-Conductive
	20-1028	TD201028	End Cup, Underwater
SQUARE CUT, 50A, O₂-O₂ CONSUMABLES			
6	20-1050	TD201050	Electrode Cutting O2
6	20-0008	TD200008	Gas Distributor, Cutting
8	20-1051	TD201051	Tip Cutting 50A
9	20-1002	60396	Shield Cup Body
10	20-1052	TD201052	Shield Cup End Cup, 50A

PCH-20 Dynapak 110, Pak 2XT



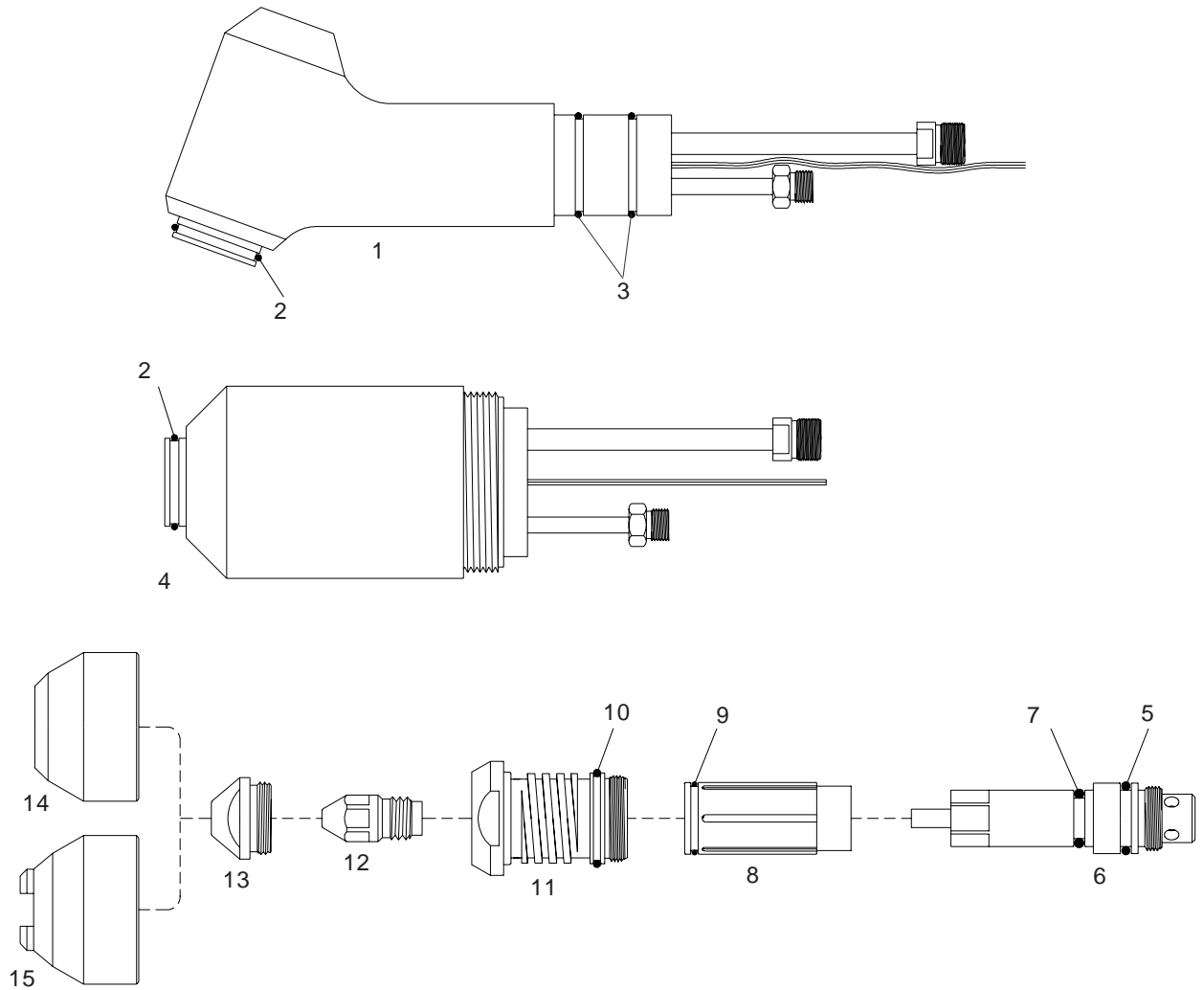
Item	Ref.	Code	Description
1	8-3220	TD83220	70° Torch Head
2	8-0533	07100.53	O-Ring (20 pcs.)
3	9-6006	52519/D	Electrode
4	8-3233	80052	Gas Distributor
5	8-3218	51284	Tip
6	8-3214	60337	Shield Cup Std.

PCH-30 Pak-3



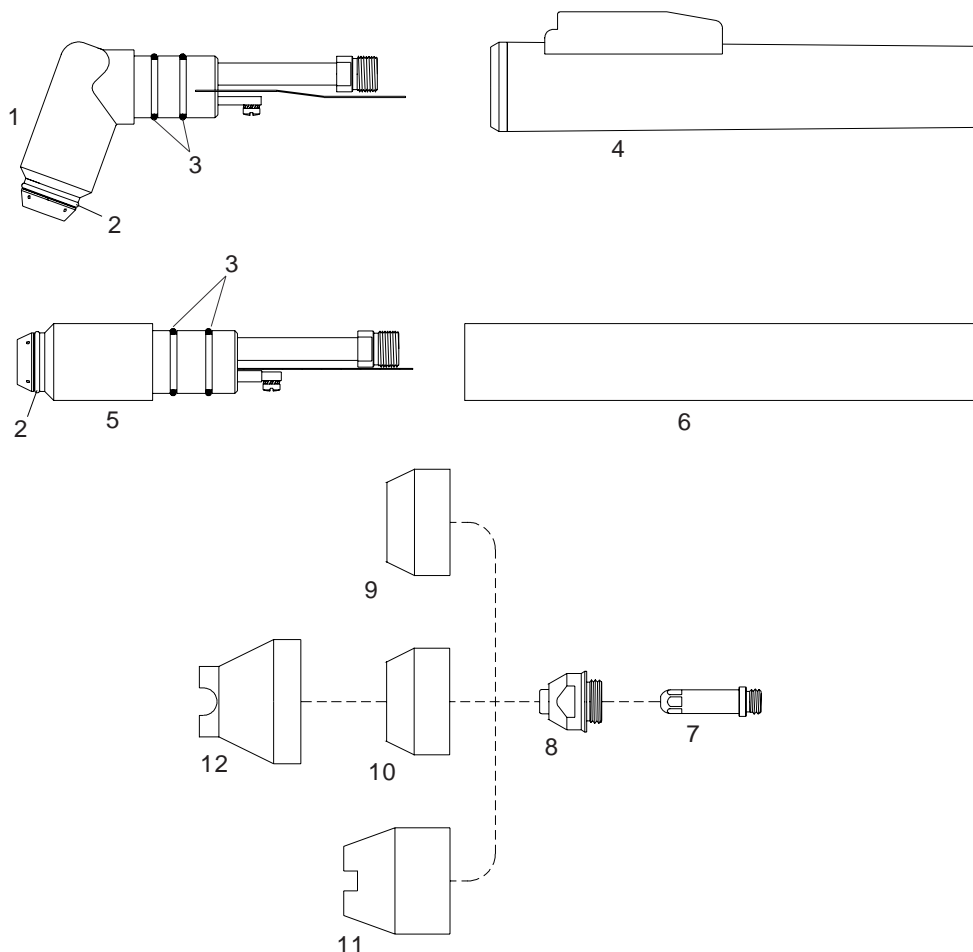
Item	Ref.	Code	Description
1	9-5503	TD95503	Electrode
2	8-3233	80052	Gas Distributor
3	9-5501	TD95501	Tip
4	9-5500	TD95500	Shield Cup Std.

PCH/M-100 Pak 10XR



Item	Ref.	Code	Description
1	8-1113	TD81113	70° Torch Head
2	8-0556	TD80556	O-Ring (Shield Cup), (10 pcs.)
3	8-0538	TD80538	O-Ring (Handle), (10 pcs.)
4	8-1112	TD81112	180° Torch Head
5	8-1152	01000.60	O-Ring, Electrode Holder, Large (10 pcs.)
6	8-1108	07603	Electrode Holder, w/O-Rings
7	8-1133	07603.42	O-Ring, Electrode Holder, Small (10 pcs.)
8	9-4339	07602	Gas Distributor, w/O-Ring
9	8-1134	07602.41	O-Ring, Gas Distributor (10 pcs.)
10	8-1135	TD81135	O-Ring, Liner (10 pcs.)
11	8-1106	07601	Liner, w/O-Ring
12	9-4340	52525	Electrode
13	9-4343	51125	Tip \varnothing 0.99 - .039 - 35A
	9-4342	51126	Tip \varnothing 1,32 - .052 - 70A
	9-4341	51127	Tip \varnothing 1,50 - .059 - 105A
14	8-1100	80021	Shield Cup - Std.
	9-4345	80020	Shield Cup - Machine
15	8-1101	80022	Shield Cup - Crown

PCH/M-51 4Xi, 6Xi, Pak-3XR, Pak-6XR, Pak-7XR, Pak-5XT, Pak-625XR, Pak-750XR



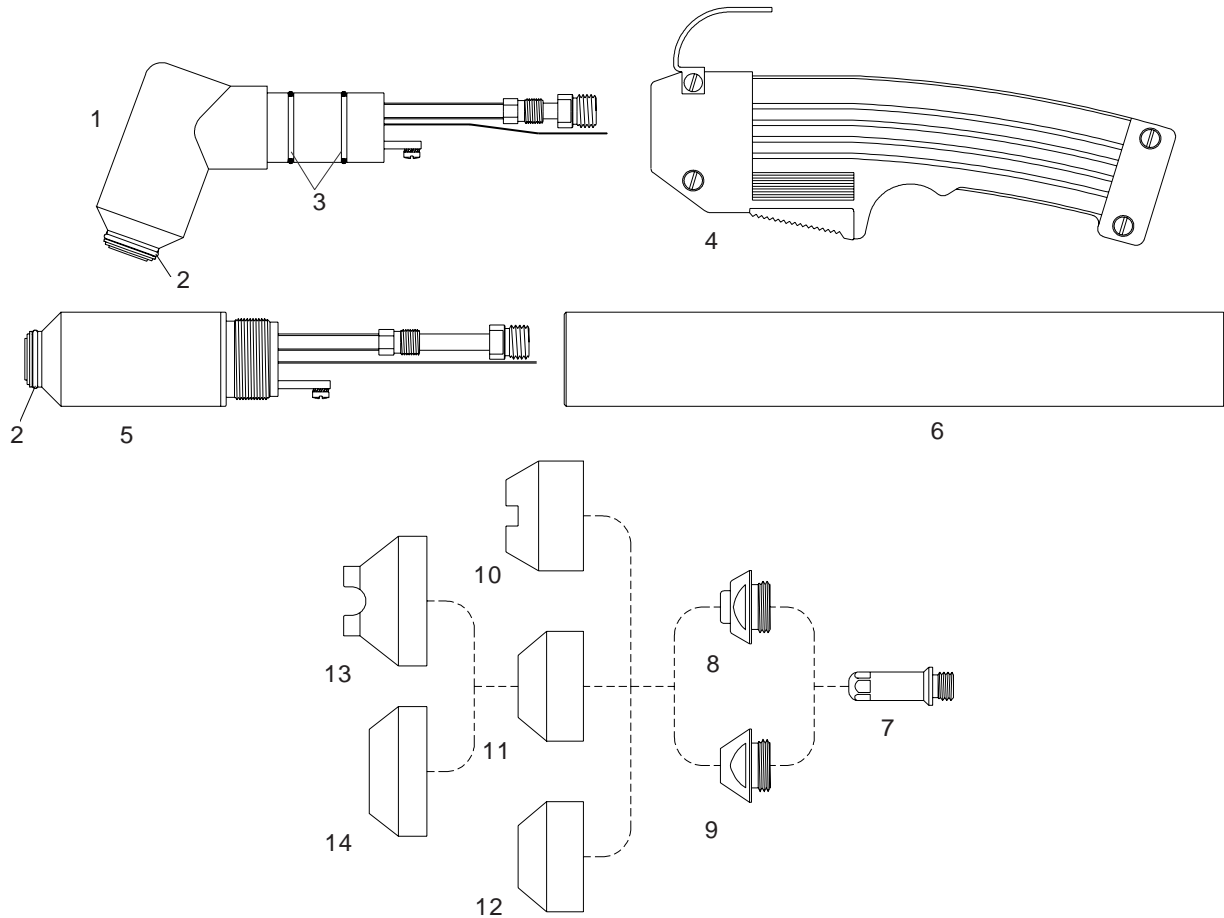
Item	Ref.	Code	Description
NS	2-2860	07120	Hand torch complete with 25' (7.5 mts) cable
NS	2-2861	07130	Hand torch complete with 50' (15 mts) cable
NS	2-2864	07140	Machine torch complete with 25' (7.5 mts) cable, (with handle item 6)
NS	2-2865	07150	Machine torch complete with 50' (15 mts) cable, (with handle item 6)
1	9-5635	07100	70° Torch Head
2	8-5525	02000.60	O-Ring (Shield Cup), (20 pcs.)
3	8-0533	07100.53	O-Ring (Handle), (20 pcs.)
4	9-5636E	07103	Handgrip complete with microswitch (incl. 9-5636, 9-5522, 8-1322)
5	9-5634	07110	180° Torch Head
6	9-5637E	07115	Machine handle
7	9-5633	52517	Electrode, long life
	9-5720	52518	Electrode, 4X1
8	9-5718	51117	Tip 10-40A - Ø0,96 - .038
	9-5631	51115	Tip 10-60A - Ø1,10 - .043
	8-3321	51115.12	Tip 65A - Ø1,20 - .047
	9-5724	51116	Tip Gouging - Ø2,00 - .078
9	9-5630	80010	Shield Cup Ceramic
10	8-2159	60416	Shield Cup-Phenolic-Std.
11	8-5526	80011	Shield Cup-Crown-Ceramic
12	9-5779	60341	Shield Cup-Crown (fits over 60416)
NS	4-5030	07180	Air and power cable 25' (7.5 mts) - Hand torch
NS	4-5031	07185	Air and power cable 50' (15 mts) - Hand torch
NS	4-5032	07190	Air and power cable 25' (7.5 mts) - Machine torch
NS	4-5033	07195	Air and power cable 50' (15 mts) - Machine torch

* CIRCLE CUTTING ATTACHMENT : See page #27

PCH/M-52

**Pak-5XR*, Pak-6XR*, Pak-7XR, Pak-8XR, Pak-10XR, Pak-625XR*, Pak-750XR*
Pak-1000XR, Pak-1250XR**

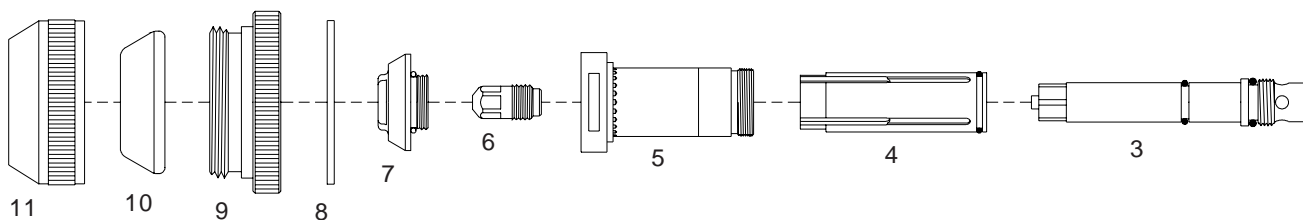
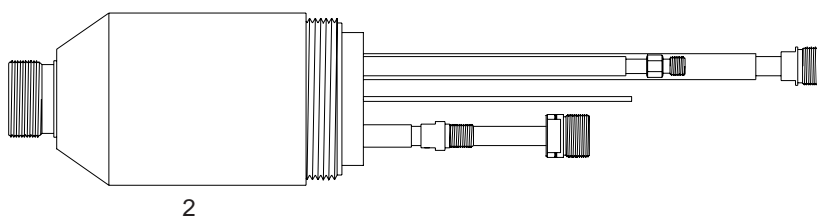
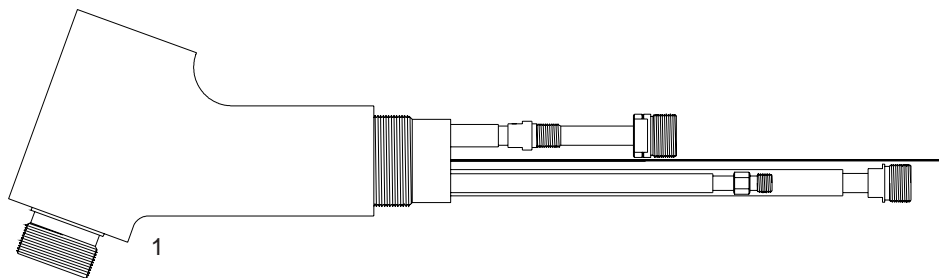
***=Dual Gas**



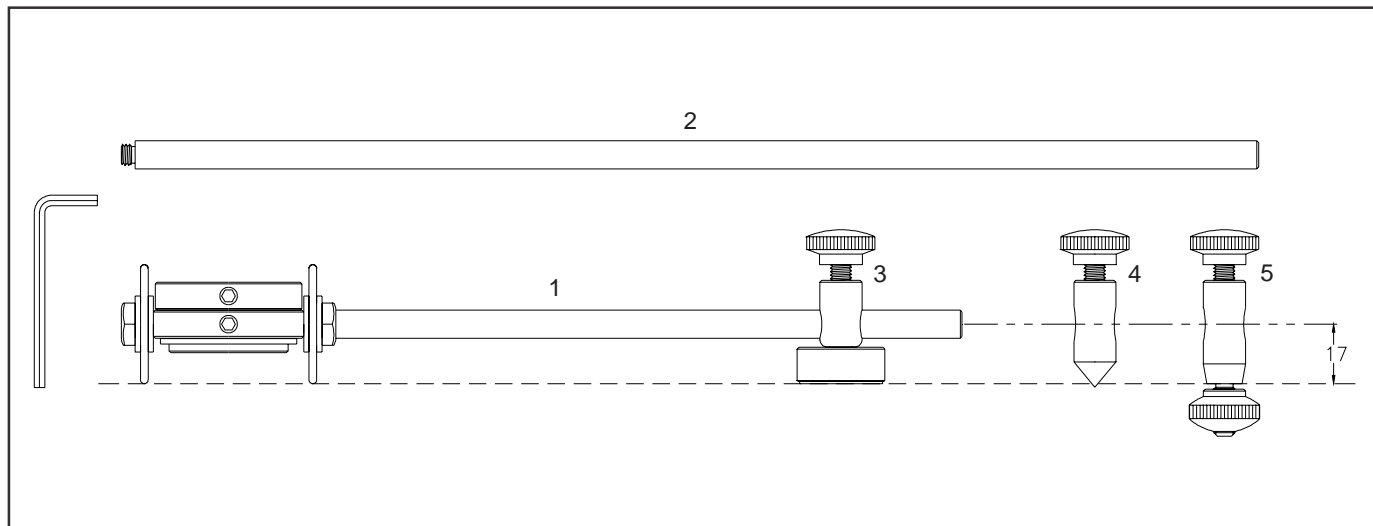
Item	Ref.	Code	Description
NS	2-2936	07220	Hand torch complete with 25' (7.5 mts) cable
NS	2-2937	07230	Hand torch complete with 50' (15 mts) cable
NS	2-2938	07240	Machine torch complete with 25' (7.5 mts) cable, (with handle item 6)
NS	2-2939	07250	Machine torch complete with 50' (15 mts) cable, (with handle item 6)
1	9-5642	07200	70° Torch Head
2	8-5525	02000.60	O-Ring (Shield Cup), (20 pcs.)
3	8-0536	07200.50	O-Ring (Handle), (20 pcs.)
4	9-5644E	07307	Handgrip complete with microswitch (incl. 9-5644, 9-5522, 8-4216)
5	9-5643	07210	180° Torch Head
6	9-7833	07215	Machine handle
7	8-3331	52565	Electrode Air, long life
	9-5619	52565/N	Electrode Air (plated), long life
8	9-5702	51180	Tip 35A - Ø 0,90 - .035
	9-5618	51181	Tip 45-55A - Ø 1,10 - .043
	9-5707	51185	Tip 60-70A - Ø 1,20 - .047
	9-5782	51185.13	Tip 80A - Ø 1,32 - .052
	9-5708	51186	Tip 105A - Ø 1,50 - .059
9	8-5129	TD85129	Tip Gouging
	9-5709	TD95709	Tip Gouging 70A - Ø 1,99 - .078
	9-5710	TD95710	Tip Gouging 105A - Ø 2,36 - .093
	9-5713	51188	Tip Gouging 105A - Ø 2,87 - .113
10	9-5694	80017	Shield Cup-Crown Ceramic
11	9-5781	60418	Shield Cup Phenolic Std.
12	9-5617	80015	Shield Cup Std. Ceramic
13	9-5780	60342	Shield Cup-Crown (fits over 60418)
14	9-5799	60336	Shield Cup (fits over 60418)
NS	4-5034	07280	Air and power cable 25' (7.5 mts) - Hand torch
NS	4-5035	07285	Air and power cable 50' (15 mts) - Hand torch
NS	4-5036	07290	Air and power cable 25' (7.5 mts) - Machine torch
NS	4-5037	07295	Air and power cable 50' (15 mts) - Machine torch

* CIRCLE CUTTING ATTACHMENT : See page #27

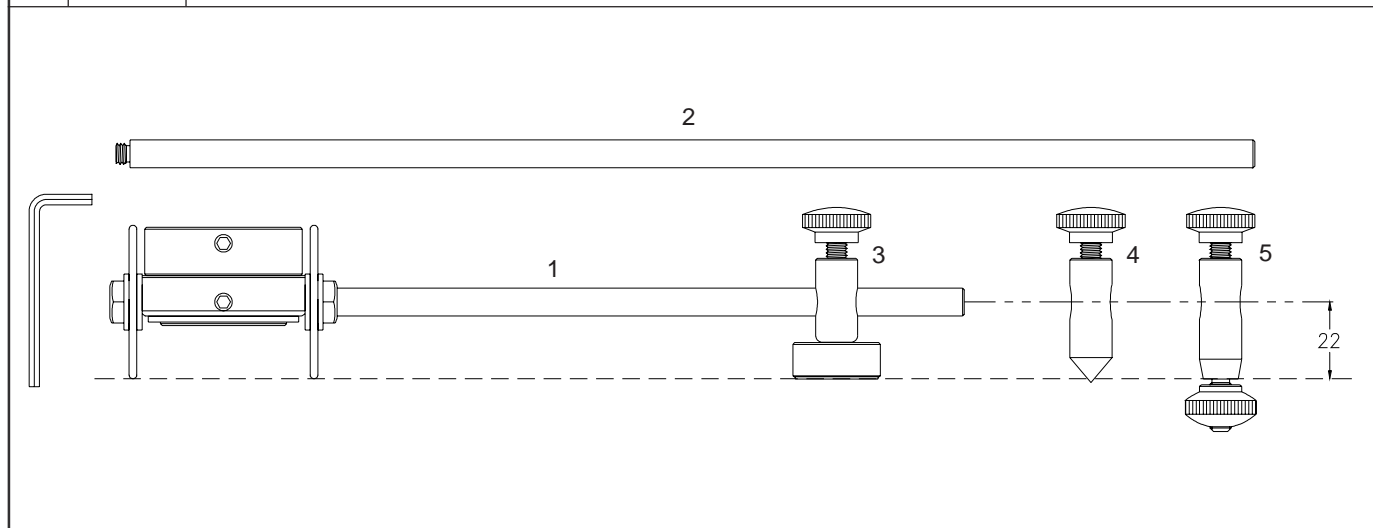
PCH/M-6B Pak-44, Pak-45



Item	Ref.	Code	Description
1	8-6583	TD86583	70° Torch Head
N/S	8-6584	TD86584	90° Torch Head
2	8-6577	TD86577	180° Torch Head
3	8-6615	TD86615	Electrode Holder
4	8-6569	TD86569	Gas Distributor
5	8-6571	TD86571	Liner
6	8-6578	52566	Electrode Gen Purpose
	8-6586	TD86586	Electrode Lo-Amp
7	8-6580	51190	Tip 100A .067 w/O-rings
	8-6648	51191	Tip 150A .076 w/O-rings
	8-6575	51192	Tip 200A .093 w/O-rings
	8-6582	51193	Tip 300A .113 w/O-rings
	8-6572	51194	Tip 400A .125 w/O-rings
8	8-6512	TD86512	Gasket
9	8-6581	TD86581	Outer Insulator
10	8-6514	80034	End Piece
11	8-6515	TD86515	End Cap



Item	Code	Description
	51859	Circle cutting attachment for PCH-52, PCH-53
	51815	Cutting guide PCH-52, PCH-53
	51846	Circle cutting attachment for PCH-10, PCH-25, PCH-25/38, PCH-26, PCH-28, PCH-35, PCH-40
		PCH-75, PCH-76, PCH-100XL, PCH-60, PCH-80
	51803	Cutting guide PCH-10, PCH-25, PCH-25/38, PCH-26, PCH-28, PCH-35, PCH-40
		PCH-75, PCH-76, PCH-100XL, PCH-60, PCH-80
	51862	Circle cutting attachment for PCH-120
	51822	Cutting guide PCH-120
1	51820	Radius bar mm. 250
2	51821	Radius bar mm. 400
3	51826	Magnetic base assembly
4	51827	Free centering straight pin
5	51828	Straight locking pin



Item	Code	Description
	51857	Circle cutting attachment for PCH-51
	51813	Cutting guide for PCH-51
1	51820	Radius bar mm. 250
2	51821	Radius bar mm. 400
3	51831	Magnetic base assembly
4	51832	Free centering straight pin
5	51833	Straight locking pin

THERMAL DYNAMICS® consumable parts

- OBSOLETE AND/OR NO MORE AVAILABLE ITEMS
- *ARTICULOS OBSOLETOS Y/O NO MAS DISPONIBLES*

2-2894 - (07620)	8-5510	9-5860
2-2895 - (07630)	8-5519	9-5861
2-2896 - (07640)	8-5520	9-5897
2-2897 - (07650)	8-6006	9-5898
4-2852 - (07680)	8-6029	9-6021
4-2853 - (07685)	8-6042	9-6037
4-2854 - (07690)	8-6043	9-6038
4-2855 - (07695)	8-6044	9-6039
8-0530	8-6045	9-6040
8-0554	8-6046	9-6047
8-0563	8-6047	9-6050
8-0607	8-6054	9-6052
8-1114	8-6056	9-6083
8-3322	8-6057	9-6108
8-4018	8-6059	9-6110
8-4050	8-6060	9-6111
8-4073	8-6068	9-6112
8-4088	8-6077	9-6113
8-4153	8-6519	9-6162
8-4154	8-6521	9-6170
8-4156	8-6522	9-6180
8-4158	8-6564	9-6264
8-4160	9-1063	9-6265
8-4161	9-1064	9-6266
8-4182	9-1246	9-6355
8-4189	9-1640	9-6357
8-4196	9-1641	9-6358
8-4197	9-1642	9-6370
8-4211	9-1662	9-6819
8-4213	9-1720	20-1227
8-4216	9-1901	20-1402
8-4217	9-2210	20-1403
8-4218	9-2421	20-1404
8-4302	9-2451	20-1405
8-4303	9-2841	20-1409
8-4308	9-4532	20-1412
8-4309	9-5522	20-1413
8-4312	9-5637	20-1414
8-5005	9-5711	20-1415
8-5007	9-5811	20-1416
8-5505	9-5826	20-1417
8-5506	9-5827	20-1418
8-5507	9-5828	20-1424
8-5508	9-5859	